

ULC LISTED FLAMMABLE LIQUID SAFETY CABINETS (INSULATED)



FEATURES

Designed & labeled by the Underwriters Laboratories of Canada C1275

Quality constructed from 18 gauge steel

Double wall welded construction

2" between the inner and outer walls filled with a fire proof insulating material

Door sill raised 2" above the bottom of the cabinet to form a liquid-tight well

Three point lock on door

Adjustable satin coat galvanized shelves permit storing of various size containers

Four adjustable levelling feet

2" threaded vents, one on each side, allow for ventilation

Fire baffle covers each vent

Painted with safety yellow enamel, with red bi-lingual letters, warning: "FLAMMABLE-KEEP FIRE AWAY"

Each cabinet individually cartoned

All cabinets – double door style, extra shelves available – slight additional charge



The WB Safety Storage Cabinets will offer safer storing for flammable liquids, reduce time-consuming trips to remote storage rooms

and permit storage close to work areas

For maximum safety, fill the cabinet with approved WB Safety Cans (pg# 57)

Designed and labeled by the Underwriters Laboratories of Canada as meeting the requirements of the National Fire Code of Canada 1980 part 4 Flammable and Combustible Liquids performance clause 4.2.10.4.



MODEL # WB45
EXTERIOR DIMENSIONS
(HXWxD)
(66 X 44 X 19)"



MODEL # WB30
EXTERIOR DIMENSIONS
(HXWxD)
(45 X 44 X 19)"

HW SERIES ULC LISTED SAFETY STORAGE CABINETS

MODEL	PRODUCT DESCRIPTION	H"	W"	D"	WEIGHT
WB30	30 GALLON ULC APPROVED 2 MANUAL DOOR	45	44	19	350
WB45	45 GALLON ULC APPROVED 2 MANUAL DOOR	65	44	19	430
WB-S	ADDITIONAL SHELVES FOR MODEL WB30 & WB45				
WB-LOCK	REPLACEMENT LOCK & ROD KIT				
WB-PAINT	TOUCHUP PAINT				



HW PREMIUM QUALITY FM APPROVED SAFETY STORAGE PRODUCTS

HAZ-ID

FEATURES:

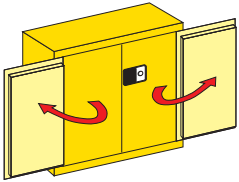
- All welded double wall 18 Gauge construction with 1 1/2" insulating air space
- 2" leakproof sill to contain spills
- Lockable 3 point self latching flush mounted paddle handle with Keys
- Radius door & tub edges
- Doors are double walled. 14 gauge outside & 18 gauge inside
- 4" heavy duty welded hinges with brass pins
- Twin 2" flame arrestor vents
- Adjustable leveling feet and grounding connector
- Powder coated finish
- Safety signage in large red letters. French & English
- SP Galvanized steel shelves adjust on 2 1/2" centers
- Meets OSHA, NFPA 30 & UFC 79 Standards
- FM Approved



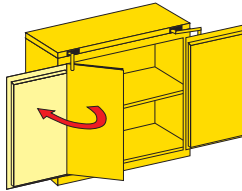
* FACTORY MUTUAL APPROVAL
DESIGNED IN ACCORDANCE WITH
NFPA AND OSHA STANDARDS

**NEW
Design!**

DOOR STYLES



**Manual
Self-latching Door**



**Concealed Self-closing,
Self-latching Door**



**Bi-folding, Self-closing and
Self-latching Door, with
fusible link**

COLOURS

- Standard Grey
- Yellow
- Blue
- Putty
- Red

DESIGN FEATURES



4" Heavy duty welded hinge with brass pin



Improved self-latching doors employ spring latches for easier and safer closing



Flush mounted locking handle provides obstruction free finger tip operation

HAZ-ID

Chemical Hazard Identification System
Système d'identification pour les produits chimiques

**THE SMART WAY TO SAFELY
STORE YOUR CHEMICALS.**

NFPA 704 is a standard maintained by the National Fire Protection Association. It defines the colloquial "fire diamond" used by emergency personnel to quickly and easily identify the risks posed by nearby hazardous materials. This is necessary to help determine what, if any, special equipment should be used, procedures followed, or precautions taken during the first moments of an emergency response and standard safe handling practices for all chemicals.

The four divisions are typically color-coded, with blue indicating level of health hazard, red indicating flammability, yellow (chemical) reactivity, and white containing special codes for unique hazards. Each of health, flammability and reactivity is rated on a scale from 0 (no hazard; normal substance) to 4 (severe risk).

The HAZ-ID chemical hazard identification label system is now standard on all ULC Listed & FM approved models. Tailored by Canadians for Canadians, the label is bilingual in French & English.

The HAZ-ID label system can also be ordered separately and added to any existing safety storage cabinet for uniform safety storage.



HWF FLAMMABLE LIQUID SAFETY CABINETS (CANS)



FEATURES:

All welded double wall 18 gauge construction with 1-1/2" insulating air space

2" leakproof sill to contain leaks

Lockable flush mounted handle (gripper pad) with 2 keys

Doors have 3 point locking system and radius edges

Doors are double walled, 14 gauge outside & 18 gauge inside

4" heavy duty welded hinges with brass pins

Twin 2" flame arrester vents

Adjustable leveling feet

Powder coated yellow finish (see options)

Safety signage in large red letters

Galvanized steel shelves adjust on 2-1/2" centers

Grounding connector

Meets OSHA and NFPA code 30 & UFC 79 standards

Chemical storage maximum - Class I & II - 60 gallons, Class III - 120 gallons



* FACTORY MUTUAL APPROVAL
DESIGNED IN ACCORDANCE WITH
NFPA AND OSHA STANDARDS

MODEL HWF12M
EXTERIOR
DIMENSIONS
(H X W X D)
(35 X 23 X 18)"



MODEL HWF24M
EXTERIOR
DIMENSIONS
(H X W X D)
(65 X 23 X 18)"



MODEL HWF90M
EXTERIOR
DIMENSIONS
(H X W X D)
(65 X 43 X 34)"



MODEL HWF45M
EXTERIOR
DIMENSIONS
(H X W X D)
(65 X 43 X 18)"



HWF FLAMMABLE LIQUID SAFETY CABINETS FOR FLAMMABLES IN SAFETY CANS														
MANUAL DOOR	SELF-CLOSE	BI-FOLD	CAPACITY	PRODUCT DESCRIPTION & DIMENSIONS H X W X D						SHELVES	FM	M WT	S WT	B WT
HWF6M	HWF6S	-	6	FLAMMABLE LIQUID SAFETY CABINET 1 DOOR 22 X 23 X 18						0	N	110	130	-
HWF12M	HWF12S	-	12	FLAMMABLE LIQUID SAFETY CABINET 1 DOOR 35 X 23 X 18						1	Y	140	160	-
HWF18M	HWF18S	-	18	FLAMMABLE LIQUID SAFETY CABINET 1 DOOR 44 X 23 X 18						1	Y	170	190	-
HWF24M	HWF24S	-	24	FLAMMABLE LIQUID SAFETY CABINET 1 DOOR 65 X 23 X 18						3	Y	234	254	-
HWF40M	HWF40S	-	40	FLAMMABLE LIQUID SAFETY CABINET 1 DOOR 44 X 23 X 34						1	Y	270	290	-
HWF22M	HWF22S	-	22	FLAMMABLE LIQUID SAFETY CABINET 2 DOOR 35 X 34 X 18						1	Y	170	190	-
HWF28M	HWF28S	-	28	FLAMMABLE LIQUID SAFETY CABINET 2 DOOR 44 X 34 X 18						2	Y	220	240	-
HWF30M	HWF30S	HWF30B	30	FLAMMABLE LIQUID SAFETY CABINET 2 DOOR 44 X 43 X 18						1	Y	240	260	270
HWF44M	HWF44S	-	44	FLAMMABLE LIQUID SAFETY CABINET 2 DOOR 65 X 34 X 18						3	Y	290	310	-
HWF45M	HWF45S	HWF45B	45	FLAMMABLE LIQUID SAFETY CABINET 2 DOOR 65 X 43 X 18						2	Y	358	378	388
HWF60M	HWF60S	HWF60B	60	FLAMMABLE LIQUID SAFETY CABINET 2 DOOR 65 X 34 X 34						2	Y	430	450	460
HWF90M	HWF90S	HWF90B	90	FLAMMABLE LIQUID SAFETY CABINET 2 DOOR 65 X 43 X 34						2	Y	470	490	500
HWF120M	-	-	120	FLAMMABLE LIQUID SAFETY CABINET 2 DOOR 65 X 59 X 34						2	Y	540	-	-
HWVC120M	-	-	120	FLAMMABLE LIQUID SAFETY CABINET COMBO UNIT 1 DRUM & 12 - 5GAL CANS						2	Y	540	-	-



HWP PAINT & INK SAFETY STORAGE CABINETS



FEATURES:

All welded double wall 18 gauge construction with 1-1/2" insulating air space

2" leakproof sill to contain leaks

Lockable flush mounted handle (gripper pad) with 2 keys

Doors have 3 point locking system and radius edges

Doors are double walled, 14 gauge outside & 18 gauge inside

4" heavy duty welded hinges with brass pins

Twin 2" flame arrester vents

Adjustable leveling feet

Powder coated red finish (see options)

Safety signage in large red letters

Galvanized steel shelves adjust on 2-1/2" centers

Grounding connector

Meets OSHA and NFPA code 30 & UFC 79 standards

Chemical storage maximum - Class I & II - 60 gallons, Class III - 120 gallons



MODEL HWP48M
EXTERIOR
DIMENSIONS
(H X W X D)
(44 X 43 X 18)"



* FACTORY MUTUAL APPROVAL
DESIGNED IN ACCORDANCE WITH
NFPA AND OSHA STANDARDS

AVAILABLE IN:

Standard Colour Red

HWP PAINT & INK SAFETY CABINETS										
MANUAL DOOR	SELF-CLOSE	BI-FOLD	CAPACITY	PRODUCT DESCRIPTION & DIMENSIONS	H X W X D	SHELVES	FM	M WT	S WT	B WT
HWP12M	HWP12S		12	SAFETY FLAMMABLE CABINET FOR PAINTS	22 X 23 X 18	1	Y	120	140	
HWP18M	HWP18S		18	SAFETY FLAMMABLE CABINET FOR PAINTS	35 X 23 X 18	2	Y	150	170	
HWP24M	HWP24S		24	SAFETY FLAMMABLE CABINET FOR PAINTS	44 X 23 X 18	3	Y	180	200	
HWP36M	HWP36S		36	SAFETY FLAMMABLE CABINET FOR PAINTS	65 X 23 X 18	5	Y	240	260	
HWP48M	HWP48S	HWP48B	48	SAFETY FLAMMABLE CABINET FOR PAINTS	44 X 43 X 18	3	Y	268	286	296
HWP72M	HWP72S	HWP72B	72	SAFETY FLAMMABLE CABINET FOR PAINTS	65 X 43 X 18	5	Y	400	420	430
HWP96M	HWP96S	HWP96B	96	SAFETY FLAMMABLE CABINET FOR PAINTS	65 X 34 X 34	5	Y	472	492	502
HWP120M	HWP120S	HWP120B	120	SAFETY FLAMMABLE CABINET FOR PAINTS	65 X 43 X 34	5	Y	500	520	512

HWU UNDER COUNTER FLAMMABLE LIQUID SAFETY CABINETS



FEATURES:

All welded double wall 18 gauge construction with 1-1/2" insulating air space

Furniture type kickplate (3"d x 4"h)

2" leakproof sill to contain leaks

Lockable flush mounted handle with 2 keys

Door(s) have 3 point locking system and radius edges

Door(s) are double walled, 14 gauge outside & 18 gauge inside

4" heavy duty welded hinges with brass pins

Twin 2" flame arrester vents mounted on back wall

Galvanized steel shelves, adjust on 2-1/2" centers

Adjustable leveling feet

Powder coated yellow finish (see options)

Safety signage in large red letters

Grounding connector



MODEL HWU22M
EXTERIOR
DIMENSIONS
(H X W X D)
(35 X 36 X 22)"



* FACTORY MUTUAL APPROVAL
DESIGNED IN ACCORDANCE WITH
NFPA AND OSHA STANDARDS

HWU UNDER COUNTER FLAMMABLE LIQUID SAFETY CABINETS										
MANUAL DOOR	SELF-CLOSE	BI-FOLD	CAPACITY	PRODUCT DESCRIPTION & DIMENSIONS	H X W X D	SHELVES	FM	M WT	S WT	B WT
HWU12M	HWU12S		12	UNDER COUNTER FLAMMABLE LIQUID CABINET	35 X 24 X 22 1 DOOR	1	Y	140	160	
HWU22M	HWU22S		22	UNDER COUNTER FLAMMABLE LIQUID CABINET	35 X 36 X 22 2 DOORS	1	Y	170	190	
HWU30M	HWU30S		30	UNDER COUNTER FLAMMABLE LIQUID CABINET	35 X 48 X 22 2 DOOR	1	Y	220	240	



HWV VERTICAL DRUM FLAMMABLE LIQUID SAFETY CABINETS

HAZ-ID

FEATURES:

All welded double wall 18 gauge construction with 1-1/2" insulating air space

2" leak proof sill to contain leaks

Lockable flush mounted handle (gripper pad) with 2 keys

Doors have 3 point locking system and radius edges

Doors are double walled, 14 gauge outside & 18 gauge inside

4" heavy duty welded hinges with brass pins

Twin 2" flame arrester vents

Adjustable leveling feet

Powder coated yellow finish (see options)

Safety signage in large red letters

Galvanized steel depth shelf adjust on 2-1/2" centers

Complete with conveyor rollers for ease of drum entry & removal

Grounding connector

Meets OSHA and NFPA code 30 & UFC 79 standards

FM Approved



MODEL HWV120M
EXTERIOR
DIMENSIONS
(H X W X D)
(65 X 59 X 34)"



MODEL HWV55M
EXTERIOR
DIMENSIONS
(H X W X D)
(65 X 34 X 34)"



* FACTORY MUTUAL APPROVAL
DESIGNED IN ACCORDANCE WITH
NFPA AND OSHA STANDARDS

HWV VERTICAL DRUM FLAMMABLE LIQUID SAFETY CABINETS

MANUAL DOOR	SELF-CLOSE	BI-FOLD	CAPACITY	PRODUCT DESCRIPTION & DIMENSIONS	SHELVES	FM	M WT	S WT	B WT
HWV55M	HWV55S		1 X (55)	SAFETY CABINET VERTICAL 55 GAL DRUM 65 X 34 X 34 C/W ROLLERS	1	Y	366	564	
HWV120M			2 X (55)	SAFETY CABINET VERT 2 X 55 GAL DRUM 65 X 59 X 34 C/W ROLLERS	1	Y	544		

HWST STACKABLE CABINETS & HWW WALL MOUNT CABINETS

HAZ-ID

FEATURES:

All welded double wall 18 gauge construction with 1-1/2" insulating air space

2" leakproof sill to contain leaks

Lockable flush mounted handle (gripper pad) with 2 keys

Door(s) have 3 point locking system and radius edges

Door(s) are double walled, 14 gauge outside & 18 gauge inside

4" heavy duty welded hinges with brass pins

Twin 2" flame arrester vents mounted on back wall

Galvanized steel shelves, adjust on 2-1/2" centers

Adjustable leveling feet with rubber caps

Powder coated yellow finish (see options)

Safety signage in large red letters

Grounding connector

Meets OSHA, and NFPA code 30

Chemical storage maximum - Class I & II - 60 gallons,
Class III -120 gallons



MODEL HWST15M
EXTERIOR
DIMENSIONS
(H X W X D)
(22 X 43 X 18)"



* FACTORY MUTUAL APPROVAL
DESIGNED IN ACCORDANCE WITH
NFPA AND OSHA STANDARDS



MODEL HWW30M
EXTERIOR
DIMENSIONS
(H X W X D)
(44 X 43 X 18)"

HWV COUNTER TOP OR STACKABLE SAFETY CABINET

MANUAL DOOR	SELF-CLOSE	CAPACITY	PRODUCT DESCRIPTION & DIMENSIONS	SHELVES	FM	M WT	S WT	B WT
HWST11M	HWST11S	11	STACKABLE SAFETY CABINET 22 X 34 X 18	0	Y	160	165	
HWST15M	HWST15S	15	STACKABLE SAFETY CABINET 22 X 43 X 18	1	Y	190	195	
HWF30M	HWF30S	30	FLAMMABLE LIQUID SAFETY CABINET 2 DOOR 44 X 43 X 18	1	Y	240	260	270



HWC ACID CORROSIVE SAFETY CABINETS



FEATURES:

All welded double wall 18 gauge construction with 1-1/2" insulating air space

2" leakproof sill to contain leaks

Lockable flush mounted handle (gripper pad) with 2 keys

Doors have 3 point locking system and radius edges

Doors are double walled, 14 gauge outside & 18 gauge inside

4" heavy duty welded hinges with brass pins

Twin 2" flame arrester vents

Adjustable leveling feet

Powder coated blue finish

Safety signage in large white letters

Galvanized steel shelves adjust on 2-1/2" centers

Polyethylene tray liner for shelves & sill

Grounding connector

AVAILABLE IN:

Manual close doors (open to full 180°)

Self-close door(s) shut, index and latch automatically as fusible link(s) melt under fire conditions at 165°

Bi fold doors (shut and latch automatically as fusible link melts under fire conditions at 165°)



* FACTORY MUTUAL APPROVAL
DESIGNED IN ACCORDANCE WITH
NFPA AND OSHA STANDARDS

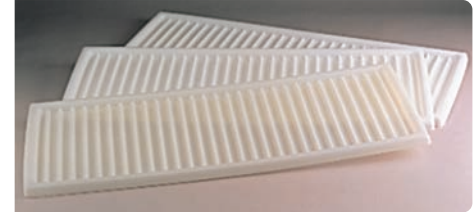


MODEL HWC45M
EXTERIOR
DIMENSIONS
(H X W X D)
(65 X 43 X 18)"



MODEL HWC30M
EXTERIOR
DIMENSIONS
(H X W X D)
(44 X 43 X 18)"

POLY SHELVES HWPT18X43
18"D X 43" W



HWC ACID CORROSIVE SAFETY CABINETS

MANUAL DOOR	SELF-CLOSE	BI-FOLD	CAPACITY	PRODUCT DESCRIPTION & DIMENSIONS	H X W X D	SHELVES	FM	M WT	S WT	B WT
HWC6M	HWC6S		6	ACID & CORROSIVE SAFETY STORAGE CABINET	22 X 23 X 18	0	Y	120	140	
HWC12M	HWC12S		12	ACID & CORROSIVE SAFETY STORAGE CABINET	35 X 23 X 18	1	Y	140	160	
HWC18M	HWC18S		18	ACID & CORROSIVE SAFETY STORAGE CABINET	44 X 23 X 18	1	Y	170	190	
HWC24M	HWC24S		24	ACID & CORROSIVE SAFETY STORAGE CABINET	65 X 23 X 18	3	Y	234	254	
HWC30M	HWC30S	HWC30B	30	ACID & CORROSIVE SAFETY STORAGE CABINET	44 X 43 X 18	1	Y	248	268	278
HWC45M	HWC45S	HWC45B	45	ACID & CORROSIVE SAFETY STORAGE CABINET	65 X 43 X 18	2	Y	370	390	400
HWC60M	HWC60S	HWC360B	60	ACID & CORROSIVE SAFETY STORAGE CABINET	65 X 34 X 34	2	Y	442	462	472

HWCST STACKABLE ACID AND CORROSIVE

MANUAL DOOR	SELF-CLOSE	BI-FOLD	CAPACITY	PRODUCT DESCRIPTION & DIMENSIONS	H X W X D	SHELVES	FM	M WT	S WT	B WT
HWCST15M	HWCST15S		15	STACKABLE ACID & CORROSIVE	22 X 43 X 18	1	Y	190	195	

HWUC UNDER COUNTER ACID CORROSIVE SAFETY CABINETS

MANUAL DOOR	SELF-CLOSE	BI-FOLD	CAPACITY	PRODUCT DESCRIPTION & DIMENSIONS	H X W X D	SHELVES	FM	M WT	S WT	B WT
HWUC12M	HWUC12S		12	UNDER COUNTER ACID & CORROSIVE CABINET	35 X 24 X 22 1 DOOR	1	Y	140	160	
HWUC22M	HWUC22S		22	UNDER COUNTER ACID & CORROSIVE CABINET	35 X 36 X 22 2 DOORS	1	Y	170	190	
HWUC30M	HWUC30S		30	UNDER COUNTER ACID & CORROSIVE CABINET	35 X 48 X 22 1 DOOR	1	Y	220	240	

MODEL RD HAZARDOUS FLAMMABLE CABINETS WITH SELF CLOSE DOORS

ITEM	WIDTH (IN.)	DEPTH (IN.)	# OF ADJUSTABLE SHELVES	# OF DOORS	CAPACITY	WEIGHT OF STANDARD MODEL
RG20	34"	12"	2	2	20 GAL	192 LBS



HWWM WALLMOUNT FLAMMABLE CABINETS

**NEW
Product!**



Manual close doors on double wall cabinets to contain flammable liquids in protected storage with 56% more steel in the door than competitors

FEATURES

All welded double wall 18 gauge construction with 1-1/2" insulating air space.

Doors are double walled, 14 gauge outside & 18 gauge inside.

2" leakproof sill to contain leaks.

Lockable flush mounted handle with 2 keys.

Doors have 3 point locking system and radius edges.

4" heavy duty welded hinges with brass pins.

Twin 2" flame arrester vents.

Powder coated yellow finish.

Safety signage in large red letters.

Galvanized steel shelves adjust on 2 1/2" centers.

Meets OSHA, and NFPA code 30 standards.

2 Doors - Manual close doors open to full 180°

Overall Height - 44"

Chemical storage maximum - Class I & II - 60 gallons, Class III - 120 gallons

Wall Mountable - hardware not included



HWWM HAZ-ID FM APPROVED WALL MOUNT CABINET				NEW PRODUCT 2015!	
MODEL	PRODUCT DESCRIPTION	W"XD"H"	CAPACITY	COLOUR	WEIGHT
HWWM20M	20 Gal Wall mount safety cabinet manual close	34 x 12 x 44	20	Yellow	192

HWDUO DUAL FLAMMABLE & CORROSIVE SAFETY CABINETS

**NEW
Product!**



Dual Storage Safety Cabinet offers safe storage of both flammable and corrosive liquids within one single cabinet. A double wall partition with 1 1/2(38mm) air space creates two compartments to isolate contents. Each compartment door features a paddle handle for easy access and locks independently. Large warning labels clearly identifies contents. Corrosive compartment includes removable poly sump liner that resists aggressive chemicals and permit storage close to work areas

Cabinet meets OSHA and NFPA requirements, is finished with white epoxy paint for increased chemical resistance, and features a leaktight, 2(51mm) deep sump in each compartment to capture spills. It is Piggyback sized to fit atop a standard 30- or 45-gallon cabinet, can be used singly on benchtop or stacked two-high, or could be wall mounted with optional Wall Hanger Assembly.

Great convenience in a high performance safety cabinet

FEATURES:

OSHA compliant, double-wall construction throughout with 1.5" (38mm) insulating air space for fire resistance

Inner double walled partition creates two compartments to separate flammables from corrosives

Independent locking doors with easy opening handles

Three-point, self-latching door closure with double key sets

Sturdy, welded 18-gauge (1mm) steel finished in chemical resistant white epoxy powder paint

2" (51mm) leakproof sills with removable poly sump tray on corrosive side

HAZ-ID warning labels identify contents and NFPA Code 30

Built-in grounding connector prevents static buildup

Self-close style designed with hidden mechanism for optimum storage space. Fusible links hold doors open when needed and automatically melt to close shut under fire conditions

Fits on benchtop or atop 30- or 45-gallon (114- or 170-ltr) cabinet

Optional accessory available for wall mounting

DESIGNED IN ACCORDANCE WITH
NFPA 30 AND OSHA STANDARDS



HWDUO DUAL FLAMMABLE & CORROSIVE CABINETS

MANUAL DOOR	SELF-CLOSE	CAPACITY	PRODUCT DESCRIPTION & DIMENSIONS	SHELVES	FM	M WT	S WT
HWST15MDUO	HWST15SDUO	15GAL	STACKABLE DUAL SAFETY CABINET 18 X 43 X 18	1	N	190	200
HWST30MDUO	HWST30SDUO	30GAL	DUAL SAFETY CABINET 18 X 43 X 44	1	N	340	360
HWST45MDUO	HWST45SDUO	45GAL	DUAL SAFETY CABINET 18 X 43 X 65	1	N	410	420



HWER EMERGENCY RESPONSE SAFETY CABINETS



Model HWER - Manual close doors on double wall cabinets to contain flammable liquids in protected storage with 56% more steel in the door than competitors



* FACTORY MUTUAL APPROVAL

**NEW
Product!**

FEATURES

All welded double wall 18 gauge construction with 1-1/2" insulating air space	Adjustable leveling feet and grounding connector
Doors are double walled, 14 gauge outside & 18 gauge inside	Powder coated yellow finish
2" leakproof sill to contain leaks	Safety signage is green with large white letters
Lockable flush mounted handle with 2 keys	Galvanized steel shelves adjust on 2-1/2" centers
Doors have 3 point locking system and radius edges	Meets OSHA, and NFPA code 30 standards
4" heavy duty welded hinges with 3/8" brass pins	2 Doors - Manual close, open to full 180°
	Chemical storage maximum - Class I & II - 60 gallons, Class III - 120 gallons



HWER HAZ-ID FM APPROVED EMERGENCY RESPONSE CABINET				NEW PRODUCT 2015!	
MODEL	PRODUCT DESCRIPTION	W"XD"XH"	CAPACITY	COLOUR	WEIGHT
HWER45M	45 Gal Emergency Response Cabinet	43 x 18 x 65	45	Yellow	300

HWHW HAZARDOUS WASTE FLAMMABLE CABINETS



**NEW
Product!**



* FACTORY MUTUAL APPROVAL

FEATURES

All welded double wall 18 gauge construction with 1-1/2" insulating air space.	Adjustable leveling feet and grounding connector.
Door(s) are double walled, 14 gauge outside & 18 gauge inside.	Powder coated gray finish.
2" leakproof sill to contain leaks.	Safety signage in large red letters.
Lockable flush mounted handle with 2 keys.	Galvanized steel shelves adjust on 2-1/2" centers.
Door(s) have 3 point locking system and radius edges.	Meets OSHA, and NFPA code 30 standards.
4" heavy duty welded hinges with brass pins.	Manual close door(s) open to full 180°.
Twin 2" flame arrester vents.	Chemical storage maximum - Class I & II - 60 gallons, Class III - 120 gallons



HWHW HAZ-ID FM APPROVED HAZARDOUS WASTE SAFETY STORAGE CABINETS				NEW PRODUCT 2015!	
MODEL	PRODUCT DESCRIPTION	W"XD"XH"	CAPACITY	COLOUR	WEIGHT
HWHW12M	Manual close hazardous flammable cabinet 1 door	23 x 18 x 35	12 Gal	Gray	142
HWHW30M	Manual close hazardous flammable cabinet 2 doors	43 x 18 x 44	30 Gal	Gray	250
HWHW45M	Manual close hazardous flammable cabinet 2 doors	43 x 18 x 65	45 Gal	Gray	300
HWHW60M	Manual close hazardous flammable cabinet 2 doors	34 x 34 x 65	60 Gal	Gray	368
HWHW90M	Manual close hazardous flammable cabinet 2 doors	43 x 34 x 65	90 Gal	Gray	440
HWHW55V	Manual close hazardous drum flammable cabinet 2 doors	34 x 34 x 65	55 Gal	Gray	480
HWHW120M	Manual close hazardous drum flammable cabinet 2 doors	59 x 34 x 65	120 Gal	Gray	
MODEL RD HAZARDOUS FLAMMABLE CABINETS WITH SELF CLOSE DOORS					
HWHW12S	Self close hazardous flammable cabinet 1 door	23 x 18 x 35	12 Gal	Gray	142
HWHW30S	Self close hazardous flammable cabinet 2 doors	43 x 18 x 44	30 Gal	Gray	250
HWHW45S	Self close hazardous flammable cabinet 2 doors	43 x 18 x 65	45 Gal	Gray	300
HWHW60S	Self close hazardous flammable cabinet 2 doors	34 x 34 x 65	60 Gal	Gray	368
HWHW90S	Self close hazardous flammable cabinet 2 doors	43 x 34 x 65	90 Gal	Gray	440
HWHW55V	Self close hazardous drum flammable cabinet 2 doors	34 x 34 x 65	55 Gal	Gray	480



HWPEST PESTICIDE SAFETY CABINETS

HAZID

FEATURES:

- All welded double wall 18 gauge construction with 1-1/2" insulating air space
- 2" leakproof sill to contain leaks
- Lockable flush mounted handle (gripper pad) with 2 keys
- Doors have 3 point locking system and radius edges
- Doors are double walled, 14 gauge outside & 18 gauge inside
- 4" heavy duty welded hinges with brass pins
- Twin 2" flame arrester vents
- Adjustable leveling feet
- Powder coated forest green finish**
- Safety signage in large red letters
- Galvanized steel shelves adjust on 2-1/2" centers
- Polyethylene tray liner for shelves & sill**
- Grounding connector



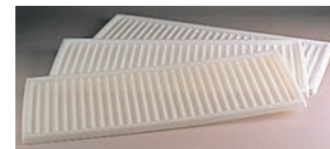
* FACTORY MUTUAL APPROVAL
DESIGNED IN ACCORDANCE WITH
NFPA AND OSHA STANDARDS



POLY SHELVES
HWPT18X43
18"D X 43" W

MODEL HWPEST30M
EXTERIOR
DIMENSIONS
(H X W X D)
(44 X 43 X 18)"

**NEW
Design!**



PEST PESTICIDE SAFETY CABINETS

MANUAL DOOR	SELF-CLOSE	BI-FOLD	CAPACITY	PRODUCT DESCRIPTION & DIMENSIONS	SHELVES	FM	M WT	S WT	B WT
HWPEST6M	HWPEST6S		6	PESTICIDE SAFETY CABINET 22 X 23 X 18	1	N	120	140	
HWPEST12M	HWPEST12S		12	PESTICIDE SAFETY CABINET 35 X 23 X 18	1	Y	140	160	
HWPEST18M	HWPEST18S		18	PESTICIDE SAFETY CABINET 44 X 23 X 18	1	Y	170	190	
HWPEST24M	HWPEST24S		24	PESTICIDE SAFETY CABINET 65 X 23 X 18	2	Y	234	254	
HWPEST30M	HWPEST30S	HWPEST30B	30	PESTICIDE SAFETY CABINET 44 X 43 X 18	1	Y	248	268	268
HWPEST45M	HWPEST45S	HWPEST45B	45	PESTICIDE SAFETY CABINET 65 X 43 X 18	2	Y	370	390	390
HWPEST60M	HWPEST60S	HWPEST60B	60	PESTICIDE SAFETY CABINET 65 X 34 X 34	2	Y	442	462	462

HWL FLAMMABLE LIQUID SAFETY CABINETS WITH LEGS

HAZID

FEATURES:

- All welded double wall 18 gauge construction with 1-1/2" insulating air space
- 2" leakproof sill to contain leaks
- Lockable flush mounted handle (gripper pad) with 2 keys
- Doors have 3 point locking system and radius edges
- Doors are double walled, 14 gauge outside & 18 gauge inside
- 4" heavy duty welded hinges with brass pins
- Twin 2" flame arrester vents
- Adjustable leveling feet
- 5" high feet

Legs allow moving unit with fork lift truck

- Powder coated yellow finish (see options)
- Safety signage in large red letters
- Galvanized steel shelves adjust on 2-1/2" centers
- Grounding connector
- Meets OSHA and NFPA code 30 & UFC 79 standards



MODEL HWL45M
EXTERIOR
DIMENSIONS
(H X W X D)
(69 X 43 X 18)"

**NEW
Design!**



* FACTORY MUTUAL APPROVAL
DESIGNED IN ACCORDANCE WITH
NFPA AND OSHA STANDARDS

HWL FLAMMABLE LIQUID SAFETY CABINETS WITH LEGS

MANUAL DOOR	SELF-CLOSE	BI-FOLD	CAPACITY	PRODUCT DESCRIPTION & DIMENSIONS	SHELVES	FM	M WT	S WT	B WT
HWL28M	HWL28S		28	SAFETY CABINET 2 DOOR 48 X 34 X 18	1	Y	230	250	
HWL30M	HWL30S	HWL30B	30	SAFETY CABINET 2 DOOR 48 X 43 X 18	2	Y	250	270	290
HWL44M	HWL44S	HWL45B	44	SAFETY CABINET 2 DOOR 69 X 34 X 18	2	Y	300	320	388
HWL45M	HWL45S	HWL60B	45	SAFETY CABINET 2 DOOR 69 X 43 X 18	2	Y	368	388	460
HWL60M	HWL60S	HWL90B	60	SAFETY CABINET 2 DOOR 69 X 34 X 34	2	Y	440	460	500
HWL90M	HWL90S		90	SAFETY CABINET 2 DOOR 69 X 43 X 34	2	Y	480	500	
HWL120M			120	SAFETY CABINET 2 DOOR 69 X 59 X 34	2	Y	550		



OXYGEN GAS/LIQUID PROPANE VERTICAL SECURITY STORAGE CABINETS



FEATURES:

Lockable mesh doors with slide bolt hasp (no lock)

All welded - ready to use

13 gauge flattened mesh sides

14 gauge top

1-1/2" x 3/16" thick corner angles

Foot pads with pre-drilled holes

Powder coated safety yellow

Safety signage in large red letters

Adjustable Safety retention chains

Meets OSHA 1910.110

NFPA 58-113 Standard

Meets CSA B149.2



MODEL HWLP0G
EXTERIOR DIMENSIONS
(H X W X D)
(70 X 62 X 38)"



MODEL HWOG20S
EXTERIOR DIMENSIONS
(H X W X D)
(70 X 60 X 38)"



MODEL HWLP8VS
EXTERIOR
DIMENSIONS
(H X W X D)
(70 X 30 X 30)"

HWOG OXYGEN GAS SAFETY / SECURITY STORAGE CABINETS

MANUAL DOORSELF-CLOSEBI-FOLD	CAPACITY	PRODUCT DESCRIPTION & DIMENSIONS	HXWXD	SHELVES	M WT
HWOG10S	10	VERTICAL GAS CYLINDER CABINET	70 X 33 X 38	0	204
HWOG20S	10 TO 20	VERTICAL GAS CYLINDER CABINET	70 X 60 X 38	0	360

*OG - NO FLOOR

HWLP LIQUID PROPANE VERTICAL SECURITY STORAGE CABINETS

MANUAL DOORSELF-CLOSEBI-FOLD	CAPACITY	PRODUCT DESCRIPTION & DIMENSIONS	HXWXD	SHELVES	M WT
HWLP2VS	2	VERTICAL GAS CYLINDER CABINET	40 X 33 X 22	1	130
HWLP4VS	4-6	VERTICAL GAS CYLINDER CABINET	40 X 33 X 40	1	180
HWLP8VS	8-12	VERTICAL GAS CYLINDER CABINET	71 X 33 X 40	2	290
HWP12VS	12-18	VERTICAL GAS CYLINDER CABINET	71 X 50 X 40	2	414
HWLP0G	COMBO	COMBINATION CYLINDER CABINET	71 X 64 X 40	2	504
HWLP16VS	16-24	VERTICAL GAS CYLINDER CABINET	71 X 64 X 40	2	556

HWS ADDITIONAL SHELVES & ACCESSORIES



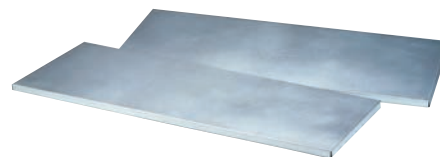
HAZID

FEATURES:

Add more shelving to increase space or replace damaged shelves with HW Series premium galvanized finished shelves

Available in a variety of sizes to fit every HW Series Safety Cabinet

HW Series polyethylene shelf trays are designed to contain Chemical / Flammable Liquid Spills and help protect the cabinet interior against the effects of corrosion



HWS ADDITIONAL SHELVES & ACCESSORIES

MANUAL DOOR	PRODUCT DESCRIPTION & DIMENSIONS
HWS18X23	ADDITIONAL SHELVING FOR CABINETS 18"D X 23" W
HWS18X43	ADDITIONAL SHELVING FOR CABINETS 18"D X 43" W
HWS34X34	ADDITIONAL SHELVING FOR CABINETS 34"D X 34" W
HWS34X43	ADDITIONAL SHELVING FOR CABINETS 34"D X 43" W
HWS34X59	ADDITIONAL SHELVING FOR CABINETS 34"D X 59" W
HWPT18X23	ADDITIONAL POLY TRAY FOR CABINETS 18"D X 23" W
HWPT18X43	ADDITIONAL POLY TRAY FOR CABINETS 18"D X 43" W
HWPT34X34	ADDITIONAL POLY TRAY FOR CABINETS 34"D X 34" W
HWPT34X43	ADDITIONAL POLY TRAY FOR CABINETS 34"D X 43" W
HWF-PAINT	TOUCHUP PAINT
HWF-KEY	REPLACEMENT KEY SET
ZW	WALL MOUNT KIT
ZF	FLOOR MOUNT KIT



FLAMMABLES IN SAFETY CANS

SECURALL®

RECOMMENDATIONS

Keep flammable liquids close to the work area in a safe and organized way while limiting employee exposure with SECURALL Safety Storage Cabinets

Choose from a large selection of models from 4 gallons to 90 gallons

They are designed to meet safety requirements whenever a job involves the handling of flammable liquids

Smaller cabinets are convenient where space is limited

MODEL # A145
EXTERIOR DIMENSIONS
(H X W X D)
(65 X 43 X 18)"



MODEL # A105
EXTERIOR DIMENSIONS
(H X W X D)
(35 X 24 X 18)"



MODEL # A130
EXTERIOR DIMENSIONS
(H X W X D)
(44 X 43 X 18)"

All cabinets comply With OSHA Regulations
Designed In Accordance With
The Standards Of NFPA Code 30



DESIGN FEATURES



Improved self-latching doors employ spring latches for easier and safer closing



Flush mounted locking handle provides obstruction free finger tip operation

Popular models are FM approved



CABINETS FOR STORING FLAMMABLES IN SAFETY CANS / CONTAINERS

MODEL NO.	TEST LAB APPROVAL	DESCRIPTION	NO. OF SHELVES	CAPACITIES	EXTERIOR DIMENSIONS APPROX. (H X W X D) IN.	SHIPPING WEIGHT APPROX. (LBS.)
A102	*†	4 GAL. SELF-LATCH STANDARD DOOR	1	MISC. SIZED CONTAINERS	22 X 17 X 17	73
A302	*†	4 GAL. SELF-CLOSE, SELF-LATCH SAFE-T-DOOR	1	MISC. SIZED CONTAINERS	24 X 17 X 17	81
A105	FM*†	12 GAL. SELF-LATCH STANDARD DOOR	1	MISC. SIZED CONTAINERS	35 X 24 X 18	138
A305	FM*†	12 GAL. SELF-CLOSE, SELF-LATCH SAFE-T-DOOR	1	MISC. SIZED CONTAINERS	37 X 24 X 18	148
A110	FM*†	16 GAL. SELF-LATCH STANDARD DOOR	1	MISC. SIZED CONTAINERS	44 X 24 X 18	164
A310	FM*†	16 GAL. SELF-CLOSE, SELF-LATCH SAFE-T-DOOR	1	MISC. SIZED CONTAINERS	46 X 24 X 18	174
A130	FM*†	30 GAL. SELF-LATCH STANDARD 2-DOOR	1	6/5 GAL. SAFETY CANS	44 X 43 X 18	247
A230	FM*†	30 GAL. SELF-CLOSE, SELF-LATCH SLIDING DOOR	1	6/5 GAL. SAFETY CANS	44 X 43 X 18	252
A330	FM*†	30 GAL. SELF-CLOSE, SELF-LATCH SAFE-T-DOOR	1	6/5 GAL. SAFETY CANS	46 X 43 X 18	267
A131	FM*†	30 GAL. SELF-LATCH STANDARD 2-DOOR	1	MISC. SIZED CONTAINERS	35 X 36 X 24	220
A231	*†	30 GAL. SELF-CLOSE, SELF-LATCH SAFE-T-DOOR	1	MISC. SIZED CONTAINERS	35 X 36 X 24	223
A331	FM*†	30 GAL. SELF-CLOSE, SELF-LATCH SAFE-T-DOOR	1	MISC. SIZED CONTAINERS	37 X 36 X 24	235
A145	FM*†	45 GAL. SELF-LATCH STANDARD 2-DOOR	2	9/5 GAL. SAFETY CANS	65 X 43 X 18	337
A245	FM*†	45 GAL. SELF-CLOSE, SELF-LATCH SLIDING DOOR	2	9/5 GAL. SAFETY CANS	65 X 43 X 18	342
A345	FM*†	45 GAL. SELF-CLOSE, SELF-LATCH SAFE-T-DOOR	2	9/5 GAL. SAFETY CANS	67 X 43 X 18	357
A160	FM*†	60 GAL. SELF-LATCH STANDARD 2-DOOR	2	12/5 GAL. SAFETY CANS	65 X 34 X 34	397
A260	*†	60 GAL. SELF-CLOSE, SELF-LATCH SLIDING DOOR	2	12/5 GAL. SAFETY CANS	65 X 34 X 34	402
A360	FM*†	60 GAL. SELF-CLOSE, SELF-LATCH SAFE-T-DOOR	2	12/5 GAL. SAFETY CANS	67 X 34 X 34	419
A190	FM*†	90 GAL. SELF-LATCH STANDARD 2-DOOR	2	18/5 GAL. SAFETY CANS	65 X 43 X 34	461
A290	*†	90 GAL. SELF-CLOSE, SELF-LATCH SLIDING DOOR	2	18/5 GAL. SAFETY CANS	65 X 43 X 34	466
A390	FM*†	90 GAL. SELF-CLOSE, SELF-LATCH SAFE-T-DOOR	2	18/5 GAL. SAFETY CANS	67 X 43 X 34	490

*Complies with OSHA regulations. FM-Factory Mutual Approved † All cabinets are designed in accordance with specifications set forth by the National Fire Protection Association



ACID / CORROSIVE STORAGE

SECURALL®

FEATURES

Benchtop Flammable/ Corrosive Storage Cabinets for both flammable and nonflammable corrosives

Comply with NFPA and OSHA requirements

Cabinet has a 3/4" leak-proof tray top, which can completely contain a 5 pint spill

Cabinets finished in blue corrosive-resistant epoxy enamel

Shelves and bottom lined with removable polyethylene trays; tray-top cabinet lined with removable polyethylene sheet

MODEL # C124
EXTERIOR
DIMENSIONS
(H X W X D)
(36 X 35 X 22)"



MODEL # C145
EXTERIOR
DIMENSIONS
(H X W X D)
(65 X 43 X 18)"

FEATURES

The leak tight sump and shelves of the cabinet are equipped with removable corrosive-resistant polyethylene trays to contain accidental spills

Cabinets are finished in corrosive-resistant blue epoxy enamel paint

Large warning label reads: Caution Corrosives or choose your own special message or wording

MODEL # C230
EXTERIOR
DIMENSIONS
(H X W X D)
(44 X 43 X 18)"

Available in 24, 30, 45 and 60 gallon capacities. Other sizes on request.

**PESTICIDE
models also
available**

**IMPORTANT:
Not recommended
for the storage of
Nitric Acid and/or
Sulfuric Acid!**

CABINETS FOR STORING CORROSIVES / FLAMMABLES / ACIDS

MODEL NO.	TEST LAB APPROVAL	DESCRIPTION	NO. OF SHELVES/TRAYS	CAPACITIES	EXTERIOR DIMENSIONS APPROX. (H X W X D) IN.	SHIPPING WEIGHT APPROX. (LBS.)
C124	FM*†	24 GAL. SELF-LATCH STANDARD 2-DOOR	1 SH/ 2 TR	MISC. SIZED CONTAINERS	36 X 35 X 22	207
C224	*†	24 GAL. SELF-CLOSE, SELF-LATCH SLIDING DOOR	1 SH/ 2 TR	MISC. SIZED CONTAINERS	36 X 35 X 22	212
C130	FM*†	30 GAL. SELF-LATCH STANDARD 2-DOOR	1 SH/ 2 TR	6/5 GAL. SAFETY CANS	44 X 43 X 18	270
C230	*†	30 GAL. SELF-CLOSE, SELF-LATCH SLIDING DOOR	1 SH/ 2 TR	6/5 GAL. SAFETY CANS	44 X 43 X 18	275
C330	FM*†	30 GAL. SELF-CLOSE, SELF-LATCH SAFE-T-DOOR	1 SH/ 2 TR	6/5 GAL. SAFETY CANS	46 X 43 X 18	290
C145	FM*†	45 GAL. SELF-LATCH STANDARD 2-DOOR	2 SH/ 3 TR	9/5 GAL. SAFETY CANS	65 X 43 X 18	363
C245	*†	45 GAL. SELF-CLOSE, SELF-LATCH SLIDING DOOR	2 SH/ 3 TR	9/5 GAL. SAFETY CANS	65 X 43 X 18	368
C345	FM*†	45 GAL. SELF-CLOSE, SELF-LATCH SAFE-T-DOOR	2 SH/ 3 TR	9/5 GAL. SAFETY CANS	67 X 43 X 18	383
C160	FM*†	60 GAL. SELF-LATCH STANDARD 2-DOOR	2 SH/ 3 TR	12/5 GAL. SAFETY CANS	65 X 34 X 34	418
C260	*†	60 GAL. SELF-CLOSE, SELF-LATCH SLIDING DOOR	2 SH/ 3 TR	12/5 GAL. SAFETY CANS	65 X 34 X 34	423
C360	FM*†	60 GAL. SELF-CLOSE, SELF-LATCH SAFE-T-DOOR	2 SH/ 3 TR	12/5 GAL. SAFETY CANS	67 X 34 X 34	440

PAINT AND INK STORAGE

SECURALL®

FEATURES

Safety storage cabinets for 1-gallon paint cans, (Class III liquids) are available in 20, 40, 60 and 120 gallon capacities

Finished in yellow epoxy enamel, with warning label reads "Flammable-Keep Fire Away", if required in red please specify

Perfect for print shops or auto body repair

Constructed to the same rigid requirements as cabinets for safety cans, available in 3 door styles



MODEL # P360
EXTERIOR
DIMENSIONS
(H X W X D)
(67 X 43 X 18)"



MODEL # P140
EXTERIOR
DIMENSIONS
(H X W X D)
(44 X 43 X 18)"

PAINT AND INK STORAGE

MODEL NO.	TEST LAB APPROVAL	DESCRIPTION	NO. OF SHELVES	CAPACITIES	EXTERIOR DIMENSIONS APPROX. (H X W X D) IN.	SHIPPING WEIGHT APPROX. (LBS.)
P120	FM*†	20 GAL. SELF-LATCH STANDARD DOOR	2	20/1 GAL. CANS	44 X 24 X 18	169
P320	FM*†	20 GAL. SELF-CLOSE, SELF-LATCH SAFE-T-DOOR	2	20/1 GAL. CANS	46 X 24 X 18	179
P140	FM*†	40 GAL. SELF-LATCH STANDARD 2-DOOR	3	40/1 GAL. CANS	44 X 43 X 18	271
P240	FM*†	40 GAL. SELF-CLOSE, SELF-LATCH SLIDING DOOR	3	40/1 GAL. CANS	44 X 43 X 18	276
P340	FM*†	40 GAL. SELF-CLOSE, SELF-LATCH SAFE-T-DOOR	3	40/1 GAL. CANS	46 X 43 X 18	291
P160	FM*†	60 GAL. SELF-LATCH STANDARD 2-DOOR	5	60/1 GAL. CANS	65 X 43 X 18	373
P260	FM*†	60 GAL. SELF-CLOSE, SELF-LATCH SLIDING DOOR	5	60/1 GAL. CANS	65 X 43 X 18	278
P360	FM*†	60 GAL. SELF-CLOSE, SELF-LATCH SAFE-T-DOOR	5	60/1 GAL. CANS	67 X 43 X 18	393
P1120	FM*†	120 GAL. SELF-LATCH STANDARD 2-DOOR	5	120 GALLONS	65 X 34 X 34	448
P2120	*†	120 GAL. SELF-CLOSE, SELF-LATCH SLIDING DOOR	5	120 GALLONS	65 X 34 X 34	453
P3120	FM*†	120 GAL. SELF-CLOSE, SELF-LATCH SAFE-T-DOOR	5	120 GALLONS	67 X 34 X 34	470

Popular models
are FM approved



LABORATORY MODELS

SECURALL[®]

FEATURES

Avoid the fire and explosion hazards of unprotected flammable liquids and chemicals with convenient SECURALL Laboratory Cabinets

These cabinets are specifically designed to fit under most counters, giving more work space on counter tops

Select from the most complete line available

Choose from Self-Latching Manual Doors or Self-Closing, Self-Latching Sliding Doors



* FACTORY MUTUAL APPROVAL
DESIGNED IN ACCORDANCE WITH
NFPA AND OSHA STANDARDS



MODEL # L236
EXTERIOR DIMENSIONS
(H X W X D)
(35 5/8 X 47 X 22)"



MODEL # L124
EXTERIOR DIMENSIONS
(H X W X D)
(35 9/16 X 35 X 22)"

LABORATORY CABINETS FOR STORING FLAMMABLES

MODEL NO.	TEST LAB APPROVAL	DESCRIPTION	NO. OF SHELVES	CAPACITIES	EXTERIOR DIMENSIONS APPROX. (H X W X D) IN.	SHIPPING WEIGHT APPROX. (LBS.)
L124	FM*†	24 GAL. SELF-LATCH STANDARD, 2-DOOR	1	MISC. SIZED CONTAINERS	35 9/16 X 35 X 22	199
L224	*†	24 GAL. SELF-CLOSE SLIDING DOOR	1	MISC. SIZED CONTAINERS	35 5/8 X 35 X 22	204
L136	FM*†	36 GAL. SELF-LATCH STANDARD, 2-DOOR	1	MISC. SIZED CONTAINERS	35 9/16 X 47 X 22	252
L236	*†	36 GAL. SELF-CLOSE SLIDING DOOR	1	MISC. SIZED CONTAINERS	35 5/8 X 47 X 22	257
L144	FM*†	44 GAL. SELF-LATCH STANDARD, 4-DOOR	1	MISC. SIZED CONTAINERS	35 9/16 X 59 X 22	284
L244	*†	44 GAL. CLOSE-SLIDING 2-DOOR	1	MISC. SIZED CONTAINERS	35 5/8 X 59 X 22	289

WALL MOUNTED & STACKABLE MODELS

SECURALL[®]

MODEL # WMA 124
EXTERIOR DIMENSIONS
(HXWXD)
(44 X 43 X 12)"



MODEL # WMA 112
EXTERIOR DIMENSIONS
(HXWXD)
(18 X 43 X 18)"



WALL MOUNTED CABINETS

Maximum storage in a compact size

These cabinets will hold up to 24 gallons of flammable liquids without taking up valuable floor space

Furnished with brackets for easy wall mounting or can be placed on a bench top

Equipped with five adjustable shelves which can be positioned to meet your specific needs



MODEL # WMA 118
EXTERIOR DIMENSIONS
(H X W X D)
(24 X 43 X 18)"

* FACTORY MUTUAL APPROVAL
DESIGNED IN ACCORDANCE WITH
NFPA AND OSHA STANDARDS

STACKABLE CABINETS

These cabinets are designed to be used as a single cabinet, to fit on top of standard 30 gallon cabinets or on top of each other

Ideal for segregating flammables or to increase the capacity of your current cabinet

WALL MOUNTED & STACKABLE MODELS

MODEL NO.	TEST LAB APPROVAL	DESCRIPTION	NO. OF SHELVES	CAPACITIES	EXTERIOR DIMENSIONS APPROX. (HXWXD) IN.	SHIPPING WEIGHT APPROX. (LBS.)
WMA112	FM*†	12 GAL. SELF-LATCH STANDARD, 2-DOOR	1	STACKABLE ON A130 CABINET	18 X 43 X 18	163
WMA118	FM*†	18 GAL. SELF-LATCH STANDARD, 2-DOOR	1	STACKABLE ON A130 CABINET	24 X 43 X 18	190
WMA124	FM*†	24 GAL. SELF-LATCH STANDARD, 2-DOOR	5	FOR MOUNTING ON WALL	44 X 43 X 12	227
WMA324	FM*†	24 GAL. SELF CLOSE, SELF-LATCH SAFE-T-DOOR	5	FOR MOUNTING ON WALL	46 X 43 X 12	235

*Complies with OSHA regulations. † All cabinets are designed in accordance with specifications set forth by the National Fire Protection Association



DRUM STORAGE CABINETS

SECURALL®

FEATURES

Vertical Cabinets

Have ball bearing rollers for easy placing and removal of 55 gallon drums

From one to twelve 5-gallon safety cans can also be stored depending on the model

Horizontal Cabinets

Store one 55 gallon drum and one 5 gallon safety can

Drum cradles available

Tracks to guide Drum Cradle into position

Choose from 3 door styles

Standard color is yellow

Also available in white, red or gray



* FACTORY MUTUAL APPROVAL
DESIGNED IN ACCORDANCE WITH NFPA AND OSHA STANDARDS



MODEL # W1080
EXTERIOR DIMENSIONS
(H X W X D)
(65 X 59 X 34)"



VERTICAL CABINET
MODEL # V1500
EXTERIOR DIMENSIONS
(H X W X D)
(65 X 59 X 34)"



HORIZONTAL CABINET
MODEL # H260
EXTERIOR DIMENSIONS
(H X W X D)
(50 X 34 X 50)"



DC6

FEATURES

Drum Cradle

800 lb. capacity permits one person to easily handle heavy 30 gal or 55 gal. drums

This cradle features ALL WELDED steel construction

Rolls smoothly on 4 inch wheels

CABINETS FOR STORING FLAMMABLES IN DRUMS – FOR INDOOR USE ONLY

MODEL NO.	TEST LAB APPROVAL	DESCRIPTION	NO. OF SHELVES	CAPACITIES	EXTERIOR DIMENSIONS APPROX. (H X W X D) IN.	SHIPPING WEIGHT APPROX. (LBS.)
H160	FM*†	60 GAL. HOR. SELF-LATCH STANDARD, 2-DOOR	-	1/55 GAL. DRUM+1/5 GAL. CAN	50 X 34 X 50	384
H260	*†	60 GAL. HOR. SELF-CLOSE, SELF-LATCH SLIDING DOOR	-	1/55 GAL. DRUM+1/5 GAL. CAN	50 X 34 X 50	389
H360	FM*†	60 GAL. HOR. SELF-CLOSE, SELF-LATCH SAFE-T-DOOR	-	1/55 GAL. DRUM+1/5 GAL. CAN	52 X 34 X 50	414
V160	FM*†	65 GAL. VER. SELF-LATCH STANDARD, 2-DOOR	1	1/55 GAL. DRUM+2/5 GAL. CAN	65 X 34 X 34	412
V260	*†	65 GAL. VER. SELF-CLOSE, SELF-LATCH SLIDING DOOR	1	1/55 GAL. DRUM + 2/5 GAL. CAN	65 X 34 X 34	417
V360	FM*†	65 GAL. VER. SELF-CLOSE, SELF-LATCH SAFE-T-DOOR	1	1/55 GAL. DRUM+2/5 GAL. CAN	67 X 34 X 34	434
V175	FM*†	75 GAL. VER. SELF-LATCH STANDARD, 2-DOOR	1	2/30 GAL. DRUMS+3/5 GAL. CAN	65 X 43 X 34	440
V275	*†	75 GAL. VER. SELF-CLOSE, SELF-LATCH SLIDING DOOR	1	2/30 GAL. DRUMS+3/5 GAL. CAN	65 X 43 X 34	445
V375	FM*†	75 GAL. VER. SELF-CLOSE, SELF-LATCH SAFE-T-DOOR	1	2/30 GAL. DRUMS+3/5 GAL. CAN	67 X 43 X 34	469
V1110	FM*†	120 GAL. VER. SELF-LATCH STANDARD, 2-DOOR	1	2/55 GAL. DRUMS+2/5 GAL. CAN	65 X 59 X 34	618
V3110	FM*†	120 GAL. VER. SELF-CLOSING, SELF-LATCH SAFE-T-DOOR	1	2/55 GAL. DRUMS+2/5 GAL. CAN	67 X 59 X 34	647
V1500	FM*†	115 GAL. VER. SELF-LATCH STANDARD, 2-DOOR	2	1/55 GAL. DRUM+12/5 GAL. CAN	65 X 59 X 34	636
ALL V-MODELS COME WITH ROLLER BOTTOMS						
DC6		DRUM CRADLE (FOR HORIZONTAL DRUM CABINET)				50

*Complies with OSHA regulations. † All cabinets are designed in accordance with specifications set forth by the National Fire Protection Association

CABINETS FOR STORING HAZARDOUS WASTE IN DRUMS – COME WITH ROLLER BOTTOMS

MODEL NO.	TEST LAB APPROVAL	DESCRIPTION	NO. OF SHELVES	CAPACITIES	EXTERIOR DIMENSIONS APPROX. (H X W X D) IN.	SHIPPING WEIGHT APPROX. (LBS.)
W1040	FM*†	60 GAL. SELF-LATCH STANDARD 2-DOOR	1	1/55 GAL. DRUM + 1/5 GAL. CAN	65 X 34 X 34	412
W2040	*†	60 GAL. SELF-CLOSE, SELF-LATCH SLIDING	1	1/55 GAL. DRUM + 1/5 GAL. CAN	65 X 34 X 34	417
W3040	FM*†	60 GAL. SELF-CLOSE, SELF-LATCH SAFE-T-DOOR	1	1/55 GAL. DRUM + 1/5 GAL. CAN	67 X 34 X 34	434
W1075	FM*†	75 GAL. SELF-LATCH STANDARD 2-DOOR	1	1/55 GAL. DRUM + 3/5 GAL. CAN	65 X 43 X 34	440
W1080	FM*†	120 GAL. SELF-LATCH STANDARD DOOR	1	2/55 GAL. DRUMS + 2/5 GAL. CAN	65 X 59 X 34	618

CABINETS FOR STORING HAZARDOUS WASTE IN CANS

MODEL NO.	TEST LAB APPROVAL	DESCRIPTION	NO. OF SHELVES	CAPACITIES	EXTERIOR DIMENSIONS APPROX. (H X W X D) IN.	SHIPPING WEIGHT APPROX. (LBS.)
W1045	FM*†	45 GAL. SELF-LATCH STANDARD 2-DOOR	2	9/5 GAL. SAFETY CANS	65 X 43 X 18	337
W2045	*†	45 GAL. SELF-LATCH SLIDING DOOR	2	9/5 GAL. SAFETY CANS	65 X 43 X 18	342
W3045	FM*†	45 GAL. SELF-CLOSE, SELF-LATCH SAFE-T-DOOR	2	9/5 GAL. SAFETY CANS	67 X 43 X 18	357
W1060	FM*†	60 GAL. SELF-LATCH STANDARD 2-DOOR	2	12/5 GAL. SAFETY CANS	65 X 34 X 34	397
W3060	FM*†	60 GAL. SELF-CLOSE, SELF-LATCH SAFE-T-DOOR	2	12/5 GAL. SAFETY CANS	67 X 34 X 34	419



LP AND OXYGEN ALUMINUM GAS CYLINDER SECURITY CABINETS

SECURALL®

FEATURES

These heavy gauge aluminum gas cylinder cabinets provide significant advantages over conventional painted steel models

Designed for outdoor storage, these all aluminum cabinets will resist weathering and won't corrode or discolor

Just 1/3 the weight of painted steel units, SECURALL's aluminum models also offer real savings on shipping charges

All welded construction, ready to use, shipped fully assembled

These cabinets will provide years of tamper resistant storage for your LP and Oxygen gas cylinders

Meets OSHA SubPart 1910.110 requirements and NFPA 58-113 standards or CSA B149.2.



MODEL # LP8-VERT
EXTERIOR DIMENSIONS
(H X W X D)
(65 X 30 X 32)"



MODEL # OG20
EXTERIOR DIMENSIONS
(H X W X D)
(65 X 60 X 32)"

CABINETS FOR STORING LP AND OXYGEN GAS CYLINDERS

MODEL NO.	TEST LAB APPROVAL	DESCRIPTION	CAPACITIES	EXTERIOR DIMENSIONS APPROX. (H X W X D) IN.	SHIPPING WEIGHT APPROX. (LBS.)
LP4	*	4 CYL. VERTICAL STANDARD DOOR	4/20, 33 OR 43 LB. CYLINDERS	33 X 30 X 32	76
LP6	*	6 CYL. VERTICAL STANDARD DOOR	6/20, 33 OR 43 LB. CYLINDERS	33 X 43 X 32	87
LP8	*	8 CYL. VERTICAL STANDARD DOOR	8/20, 33 OR 43 LB. CYLINDERS	65 X 30 X 32	117
LP12	*	12 CYL. VERTICAL STANDARD 2-DOOR	12/20, 33 OR 43 LB. CYLINDERS	65 X 43 X 32	126
LP16	*	16 CYL. VERTICAL STANDARD 2-DOOR	16/20, 33 OR 43 LB. CYLINDERS	65 X 60 X 32	204
OG10	*	5-10 CYL. VERTICAL STANDARD DOOR	OXYGEN, GAS CYLINDERS	65 X 33 X 32	93
OG20	*	10-20 CYL. VERTICAL STANDARD 2-DOOR	OXYGEN, GAS CYLINDERS	65 X 66 X 32	177
ALL WELDED, HEAVY GAUGE ALUMINUM CONSTRUCTION				65 X 60 X 32	

*Meets OSHA Subpart 1910.110 requirements and NFPA 58-113 standards or Canadian Standards Association CSA B149.2 .

CABINET ACCESSORIES

SECURALL®



MODEL # S1



MODEL # S2



MODEL # P2



MODEL # FGH200

CABINET ACCESSORIES

MODEL NO.	DESCRIPTION (@ CORROSIVE RESISTANT)	SHIPPING WT. APPROX. (LBS)	MODEL NO.	DESCRIPTION (@ CORROSIVE RESISTANT)	SHIPPING WT. APPROX. (LBS.)
WP1	OUTDOOR WEATHERPROOF PACKAGE (FACTORY INSTALLED)	VARIES	S1	EXTRA SHELF (FOR CABINETS 24" WIDE)	5
SC	SHELF CLIP	1	S15	EXTRA SHELF (FOR 30 GAL. CABINETS 36" WIDE)	13
P1	EXTRA POLY LINER TRAY (FOR CABINETS 35" WIDE) @	4	S2	EXTRA SHELF (FOR CABINETS 43" WIDE) EXCEPT FOR 90 GAL.	12
P2	EXTRA POLY LINER TRAY (FOR CABINETS 43" WIDE) @	3	S3	EXTRA SHELF (FOR CABINETS 34" WIDE)	17
P3	EXTRA POLY LINER TRAY (FOR CABINETS 34" WIDE) @	3	S4	EXTRA SHELF (FOR 90 GAL. CABINETS)	21
EXM200	EXPLOSION PROOF EXHAUST BLOWER & MOTOR 1/3 H.P.	50	S5	EXTRA SHELF (FOR CABINETS 59" WIDE) EXCEPT FOR LAB CABINETS	16
FGH200	GALVANIZED FLEXIBLE HOSE ASSEMBLY FOR EXHAUST BLOWER	21	S9	EXTRA SHELF (FOR CABINETS 34" WIDE) W/ROLLER BOTTOM	7
DC6	DRUM CRADLE (FOR HORIZONTAL DRUM CABINET)	50	C1	EXTRA SHELF (FOR CABINETS 35" WIDE) @	7
IGW1	INSULATING GROUNDING WIRE ONLY	1	C2	EXTRA SHELF (FOR CABINETS 43" WIDE) @	7
IGW3	INSULATING GROUNDING WIRE WITH ONE CLIP	1	C3	EXTRA SHELF (FOR CABINETS 34" WIDE) @	9
IGW5	INSULATING GROUNDING WIRE WITH TWO CLIPS	1	LS5	EXTRA SHELF (FOR LAB CABINETS 35" WIDE)	12
IGW7	INSULATING GROUNDING WIRE WITH C CLAMP AND CLIP	1	LS10	EXTRA SHELF (FOR LAB CABINETS 47" WIDE)	16
BAW2	FLEXIBLE BONDING WIRE ONLY	1	LS15	EXTRA SHELF (FOR LAB CABINETS 59" WIDE)	22
BAW4	FLEXIBLE BONDING WIRE WITH ONE CLIP	1	WMS5	EXTRA SHELF (FOR WALL MOUNTED CABINET WMA124)	8
BAW6	FLEXIBLE BONDING WIRE WITH TWO CLIPS	1	H7	EXTRA SHELF FOR HIGH SECURITY CABINET	9
BAW8	FLEXIBLE BONDING WIRE WITH C CLAMP AND CLIP	1			
BR24	DRUM CABINET RAMP	30			



MEDICAL GAS STORAGE CABINETS

SECURALL®

FEATURES

- Reinforced all welded construction
- Large warning label
- Flush mounted locking handle
- Heavy gauge piano hinges
- Adjustable leveling legs (4)
- Double wall construction with 1 1/2 air space
- 3 point self-latching doors
- Urethane finish in OSHA Safety Green

Cabinets are designed to meet storage requirements set forth in:

NFPA Code 99 - Health Care Facilities

NFPA Code 101 - Life Safety

NFPA Code 30 - Flammable & Combustible Liquids

Store your portable medical gas cylinders safely and in compliance with OSHA requirements.

These lockable storage cabinets limit access to authorized personnel, protecting cylinders from theft, damage or tampering. The heavy-gauge, double walled construction shields your cylinders from heat, sparks and flame, and separates them from flammable and combustible materials. Designed for D- and E-size cylinders up to 33-3/4" long x 4-1/4" diameter and H-size cylinders up to 60" long x 9-1/4" diameter. Fire lining available.



MG304



MG109H



MG321



MG106H

NEW! MEDICAL CABINETS FOR STORING OXYGEN CYLINDERS VERTICALLY

MODEL	PRODUCT DESCRIPTION	CYLINDER CAPACITY	CYLINDER TYPE	DIA "	H x W x D	WEIGHT (lbs)
MG102	SELF-LATCH STANDARD DOOR	1 – 2 CYLD.	D,E	4 1/4	44 X 14 X 9	97
2MG102FL	SELF-LATCH STANDARD DOOR, FIRE-LINED	1 – 2 CYLD.	D,E	4 1/4	44 X 14 X 9	112
MG104	SELF-LATCH STANDARD DOOR	2 – 4 CYLD.	D,E	4 1/4	44 X 14 X 13	115
MG104FL	SELF-LATCH STANDARD DOOR, FIRE-LINED	2 – 4 CYLD.	D,E	4 1/4	44 X 14 X 13	135
MG304	SELF-LATCH SELF-CLOSE SAFE-T-DOOR	1 – 2 CYLD.	D,E	4 1/4	46 X 14 X 13	125
MG304FL	SELF-LATCH SELF-CLOSE SAFE-T-DOOR, FIRE-LINED	1 – 2 CYLD.	D,E	4 1/4	46 X 14 X 13	145
MG109	SELF-LATCH STANDARD DOOR	9 – 12 CYLD.	D,E	4 1/4	44 X 23 X 18	170
MG109FL	SELF-LATCH STANDARD DOOR, FIRE-LINED	9 – 12 CYLD.	D,E	4 1/4	44 X 23 X 18	199
MG309	SELF-LATCH SELF-CLOSE SAFE-T-DOOR	9 – 12 CYLD.	D,E	4 1/4	46 X 23 X 18	180
MG309FL	SELF-LATCH SELF-CLOSE SAFE-T-DOOR, FIRE-LINED	9 – 12 CYLD.	D,E	4 1/4	46 X 23 X 18	209
MG309TL	SELF-LATCH SELF-CLOSE SAFE-T-DOOR, TOP-LOAD	9 – 12 CYLD.	D,E	4 1/4	40 X 23 X 18	160
MG309TLFL	SELF-LATCH SELF-CLOSE SAFE-T-DOOR, TOP-LOAD, FIRE-LINED	9 – 12 CYLD.	D,E	4 1/4	40 X 23 X 18	185
MG121	SELF-LATCH STANDARD DOOR	21 – 24 CYLD.	D,E	4 1/4	44 X 43 X 18	265
MG121FL	SELF-LATCH STANDARD DOOR, FIRE-LINED	21 – 24 CYLD.	D,E	4 1/4	44 X 43 X 18	308
MG321	CYL, SELF-LATCH SELF-CLOSE SAFE-T-DOOR	21 – 24 CYLD.	D,E	4 1/4	46 X 43 X 18	280
MG321FL	SELF-LATCH SELF-CLOSE SAFE-T-DOOR, FIRE-LINED	21 – 24 CYLD.	D,E	4 1/4	46 X 43 X 18	323
MG321TL	SELF-LATCH SELF-CLOSE SAFE-T-DOOR, TOP-LOAD	21 – 24 CYLD.	D,E	4 1/4	40 X 43 X 18	259
MG321TLFL	SELF-LATCH SELF-CLOSE SAFE-T-DOOR, TOP-LOAD, FIRE-LINED	21 – 24 CYLD.	D,E	4 1/4	40 X 43 X 18	297
MG106H	SELF-LATCH STANDARD DOOR	6 – 9 CYLD.	H	9	65 X 34 X 34	372
MG106HFL	SELF-LATCH STANDARD DOOR, FIRE-LINED	6 – 9 CYLD.	H	9	65 X 34 X 34	436
MG306H	SELF-LATCH SELF-CLOSE SAFE-T-DOOR	6 – 9 CYLD.	H	9	67 X 34 X 34	394
MG306HFL	SELF-LATCH SELF-CLOSE SAFE-T-DOOR, FIRE-LINED	6 – 9 CYLD.	H	9	67 X 34 X 34	458
MG109H	SELF-LATCH STANDARD DOOR	9 – 12 CYLD.	H	9	65 X 43 X 34	443
MG109HFL	SELF-LATCH STANDARD DOOR, FIRE-LINED	9 – 12 CYLD.	H	9	65 X 43 X 34	520
MG309H	SELF-LATCH SELF-CLOSE SAFE-T-DOOR	9 – 12 CYLD.	H	9	67 X 43 X 34	473
MG309HFL	SELF-LATCH SELF-CLOSE SAFE-T-DOOR, FIRE-LINED	9 – 12 CYLD.	H	9	67 X 43 X 34	550

FL = FIRE LINED WITH 3/4" GYPSUM PANEL DRYWALL

TL = TOP LOAD MODEL WITH SAFETY HYDRAULIC CYLINDER CLOSURE

CA18-MGREEN CASTER ASSEMBLY FOR MG CABINETS 18" IN DEPTH (FACTORY INSTALLED)

30

CA34-MGREEN CASTER ASSEMBLY FOR MG CABINETS 34" IN DEPTH

35



MEDICAL CARTS FOR CYLINDERS

Models KJ, KK, KL - Medical carts for 24, 30 and 60 cylinders



FEATURES

All welded steel construction (except casters).

Durable 14 gauge trays, 1-1/2" x 3/16" angle corner posts, and 12 gauge caster mounts and tank supports.

Raised offset handle.

Bolt on casters, 2 swivel & 2 rigid, for easy replacement and superior cart tracking - see specifications chart.

Powder coated green finish.

Trays have lasercut holes to hold cylinders in upright position.



MODEL	DESCRIPTION	WxL (IN)	5" CASTERS CAT. NO.'S			8" CASTERS CAT. NO.'S	
			PHENOLIC	RUBBER	WGT. (LBS)	SEMI-PNEUMATIC	WGT. (LBS)
KJ	24 CYLINDER MEDICAL CART FOR M7, M9, C, D & E SIZES	24 X 36	KJ024-U5-EP	KJ024-T5-EP	70	KJ024-Z8-EP	90
KK	30 CYLINDER MEDICAL CART FOR M4, M6 & B SIZES	24 X 24	KK030-U5-EP	KK030-T5-EP	66	KK030-Z8-EP	86
KL	60 CYLINDER MEDICAL CART FOR M4, M6 & B SIZES	24 X 48	KL060-U5-EP	KL060-T5-EP	100	KL060-Z8-EP	120
2,000 LBS CAPACITY		WxL (IN)	5" X 2" CASTERS CAT. NO.'S			8" CASTERS CAT. NO.'S	
MODEL	DESCRIPTION		URETHANE	THERMORUBBER	WGT. (LBS)	SEMI-PNEUMATIC	WGT. (LBS)
KM	24 CYLINDER MEDICAL CART FOR M7, M9, C, D & E SIZES	24 X 36	KM024-U6-EP	KM024-T6-EP	80	KM024-Z8-EP	90
KN	40 CYLINDER MEDICAL CART FOR M7, M9, C, D & E SIZES	30 X 42	KN040-U9-EP	KN040-T9-EP	120	KN040-Z9-EP	130

WEATHER PROOF FLAMMABLE STORAGE CABINETS



SECURALL® Weatherproof cabinets offer the same dependable storage for flammables and combustibles as our standard safety cabinet line with added protection from the elements.

FEATURES

The double walled FM Approved Cabinets are built with 18 gauge galvanized steel and painted with a weather-resistant, urethane finish that is also resistant to UV rays.

All models feature a sloped roof with a 2 3/4" overhang for and interior & exterior astragals that prevent rain and snow penetration, while the flush mounted stainless steel locking paddle handle resists corrosion.

Easily move these cabinets to the appropriate work location using built-in heavy gauge forklift channels, and then secure with fully welded 7 gauge steel bolt-down brackets.

Available in 30, 45, 60 & 90 gallon capacities with manual and self-closing door styles. Self-closing Safe-T-Doors have fusible links that melt at 165°F allowing the doors to automatically close and latch. Standard color is Yellow.

Cabinets meet NFPA 40 CFR 264, 265, NFPA Code 30 & OSHA 1910 requirements.



CABINETS FOR STORING FLAMMABLES OUTDOORS						
MODEL NO.	DESCRIPTION	NO. OF SHELVES	EXTERIOR DIM. (H" x W" x D")	APPROX. SHIP WT (LBS)	ADDTN'L SHELF	APPROX. SHIP WT. (LBS)
A130WP1	30 GAL. WEATHERPROOF, MANUAL 2-DOOR	1	48 X 43 X 18	282	S2-05	12
A330WP1	30 GAL. WEATHERPROOF, SELF-CLOSE, SELF-LATCH SAFE-T-DOOR	1	50 X 43 X 18	302	S2-05	12
A145WP1	45 GAL. WEATHERPROOF, MANUAL 2-DOOR	2	69 X 43 X 18	372	S2-05	12
A345WP1	45 GAL. WEATHERPROOF, SELF-CLOSE, SELF-LATCH SAFE-T-DOOR	2	71 X 43 X 18	392	S2-05	12
A160WP1	60 GAL. WEATHERPROOF, MANUAL 2-DOOR	2	69 X 31 X 31	423	S3-05	12
A360WP1	60 GAL. WEATHERPROOF, SELF-CLOSE, SELF-LATCH SAFE-T-DOOR	2	71 X 31 X 31	445	S3-05	12
A190WP1	90 GAL. WEATHERPROOF, MANUAL 2-DOOR	2	69 X 43 X 31	503	S4-05	12
A390WP1	90 GAL. WEATHERPROOF, SELF-CLOSE, SELF-LATCH SAFE-T-DOOR	2	71 X 43 X 31	532	S4-05	12
881	HIGH SECURITY HANDLE WITH HASP			2		



DRUM SAFETY STORAGE BUILDINGS

SECURALL®

FEATURES

Chemical/corrosive/ultraviolet resistant epoxy paint

Leak tight sump

Natural convection ventilation

Explosion relief panels standard

Removable galvanized steel grating

Reflective warning tape

Forklift channels

Non-sparking aluminum door sill

Specifically designed for outdoor storage and dispensing from 55-gallon drums containing flammable or combustible liquids. Outer wall is constructed of welded 16 or 12 gauge steel. Inner wall is constructed of 18 gauge steel. Outdoor storage buildings are constructed with 3" airspace throughout. Commercial grade lock set handle with inside release.

Call for options: Custom sizes, Fire rating, Shelves, Fire Suppression System, Explosion-Proof Lighting, Heating & Cooling, Ramps, Fiberglass Floor Grating, etc.

Engineered

Natural Convection Air Vents
(OSHA, FM 6049, IBC)

Explosion Relief Panel(s)
(IBC, FM, NFPA)

Static Ground Connection
Inside and Out
(FM, OSHA, NFPA)

Forklift Channels with Anchoring
Brackets
(EPA, to lift off ground & allow
for visual inspection of sump
area, IBC)

HAZMAT CHEMICAL STORAGE



NFPA 704
Warning label for hazard rating
system with placard holder
and protective shield
(FM, OSHA, NFPA)

Removable galvanized steel
safety floor planking
(250lb FM Requirement,
OSHA 1910, IBC)

Leak-tight, continuously
welded sump meets EPA and
OSHA requirements for
secondary containment
(EPA, NFPA, OSHA, FM, IBC)

CHEMICAL / CORROSIVE / ULTRAVIOLET RESISTANT PAINT

Reflective Warning Tape Marking Entry
(OSHA, IBC)

Heavy Gauge Aluminum Threshold

MODEL # B6400
EXTERIOR DIMENSIONS
(H X W X D)
(8'6" X 34' X 8")



OSHA



* FACTORY MUTUAL APPROVAL

All models are designed in
accordance with the
standards set forth by NFPA Code
30 and comply with OSHA and EPA
regulations

All models are FM Approved for
the storing and
dispensing of flammable and
combustible liquids.

Available with 2 or 4
Hour Fire Rating

Meets Canadian Electrical
Standards

SAFETY STORAGE BUILDINGS FOR FLAMMABLES / HAZARDOUS MATERIALS IN DRUMS

MODEL NO.	TEST LAB APPROVAL	DESCRIPTION	CAPACITIES GALLON DRUMS	EXTERIOR DIMENSIONS APPROX. (H X W X D) IN.	SHIPPING WEIGHT APPROX. (LBS.)
B200X	FM*†	OUTDOOR DRUM STG. W/EXPLOSION RELIEF/CLASS I,II LIQUIDS	2/55	6'11" X 5' X 3'6"	1,352
B400X	FM*†	OUTDOOR DRUM STG. W/EXPLOSION RELIEF/CLASS I,II LIQUIDS	4/55	6'11" X 5' X 5'	1,649
B600X	FM*†	OUTDOOR DRUM STG. W/EXPLOSION RELIEF/CLASS I,II LIQUIDS	6/55	8'4" X 7' X 5'	2,051
B900X	FM*†	OUTDOOR DRUM STG. W/EXPLOSION RELIEF/CLASS I,II LIQUIDS	9/55	8'4" X 7' X 7'	2,590
B1200X	FM*†	OUTDOOR DRUM STG. W/EXPLOSION RELIEF/CLASS I,II LIQUIDS	12/55	8'4" X 7' X 9'	3,224
B1600X	FM*†	OUTDOOR DRUM STG. W/EXPLOSION RELIEF/CLASS I,II LIQUIDS	16/55	8'4" X 10' X 8'	4,751
B2400X	FM*†	OUTDOOR DRUM STG. W/EXPLOSION RELIEF/CLASS I,II LIQUIDS	24/55	8'4" X 14' X 8'	5,913
B3200X	FM*†	OUTDOOR DRUM STG. W/EXPLOSION RELIEF/CLASS I,II LIQUIDS	32/55	8'4" X 18' X 8'	7,400
B4800X	FM*†	OUTDOOR DRUM STG. W/EXPLOSION RELIEF/CLASS I,II LIQUIDS	48/55	8'4" X 26' X 8'	9,761
B6400X	FM*†	OUTDOOR DRUM STG. W/EXPLOSION RELIEF/CLASS I,II LIQUIDS	64/55	8'4" X 34' X 8'	12,629
B8000X	FM*†	OUTDOOR DRUM STG. W/EXPLOSION RELIEF/CLASS I,II LIQUIDS	80/55	8'4" X 42' X 8'	14,201

Building priced lower without explosion relief panel



AGRI-CHEMICAL STORAGE BUILDINGS

SECURALL®

FEATURES

High Security Lock

Fiberglass insulated walls, Fluorescent interior lights

Chemical/corrosive/ultraviolet resistant epoxy

Optional leak tight steel shelves

GFCI protected electrical wiring

Forklift Channels

Cardholder & NFR warning label

Many options available

HERBERT WILLIAMS offers a complete line of buildings for storing agri-chemicals safely. All buildings are designed to help keep you in accordance with safety rules when mixing and handling pesticides.

HERBERT WILLIAMS products will help to protect you from chemical spills, children and animal poisoning, theft, fire and unauthorized personnel. Meets or exceeds EPA regulations.

Agri-Chemical Lockers/Buildings are also available with 2 and 4-hour fire ratings. Fire-rating is dependant on the proximity of the location of your outdoor storage Locker/Building to any adjacent building or property line. Storage Units located within 10 feet of a main building or property line require a 4-hour fire rating. Units located more than 10 feet and less than 50 feet from a main building or property line require a 2-hour fire rating. Units located more than 75 feet from a main building or property line require do not require a fire rating (Check with your local authority having jurisdiction).

Natural Convection Air Vents
(OSHA, FM 6049, IBC)

R11 Fiberglass Insulation in Ceiling and Walls
(IBC)

Vapour-resistant Exterior Light with Photocell
(UL, OSHA, IBC)

Forklift Channels with Anchoring Brackets
(EPA, to lift off ground & allow for visual inspection of sump area, IBC)

PESTICIDE AND AGRI-CHEMICAL STORAGE



CHEMICAL / CORROSIVE / ULTRAVIOLET RESISTANT PAINT

Dust-proof, Fluorescent Interior Light with Weatherproof Switch
(UL, OSHA, IBC)

Removable galvanized steel safety floor planking
(250lb FM Requirement, OSHA 1910, IBC)

Leak-tight, continuously welded sump meets EPA and OSHA requirements for secondary containment
(EPA, NFPA, OSHA, FM, IBC)

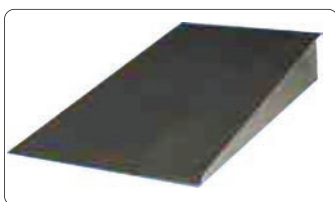
Reflective Warning Tape Marking Entry
(OSHA 1910, IBC)

Heavy Gauge Aluminum Threshold
(IBC)

MODEL # AG1600
EXTERIOR DIMENSIONS
(H X W X D)
(8'6" X 10' X 8')



RAMPS ARE COMPATIBLE WITH BOTH HAZARDOUS CHEMICAL AND AGRI-CHEMICAL STORAGE LOCKERS AND BUILDINGS.



OSHA

SMART
certified
Sustainable
Gold



* FACTORY MUTUAL APPROVAL

AG-CUSTOM

Design your own building
with your sizes and options
up to 42 feet wide.

Call for more information
including pricing

BUILDINGS FOR STORING AGRI-CHEMICAL MATERIALS

MODEL NO.	TEST LAB APPROVAL	DESCRIPTION	CAPACITIES CUBIC FEET	EXTERIOR DIMENSIONS APPROX. (H X W X D) IN.	SHIPPING WEIGHT APPROX. (LBS.)
AG200	FM*†	OUTDOOR STORAGE FOR AGRI-CHEMICAL MATERIAL	68.4	7'1" X 5' X 3'6"	1,499
AG400	FM*†	OUTDOOR STORAGE FOR AGRI-CHEMICAL MATERIAL	145.1	7'1" X 5' X 5'	1,891
AG600	FM*†	OUTDOOR STORAGE FOR AGRI-CHEMICAL MATERIAL	211.4	8'6" X 7' X 5'	2,331
AG900	FM*†	OUTDOOR STORAGE FOR AGRI-CHEMICAL MATERIAL	308.1	8'6" X 7' X 7'	2,937
AG1200	FM*†	OUTDOOR STORAGE FOR AGRI-CHEMICAL MATERIAL	404.7	8'6" X 7' X 9'	3,638
AG1600	FM*†	OUTDOOR STORAGE FOR AGRI-CHEMICAL MATERIAL	524.1	8'6" X 10' X 8'	5,226
AG2400	FM*†	OUTDOOR STORAGE FOR AGRI-CHEMICAL MATERIAL	747.7	8'6" X 14' X 8'	6,443
AG3200	FM*†	OUTDOOR STORAGE FOR AGRI-CHEMICAL MATERIAL	971.3	8'6" X 18' X 8'	8,030
AG4800	FM*†	OUTDOOR STORAGE FOR AGRI-CHEMICAL MATERIAL	1418.5	8'6" X 26' X 8'	10,566
AG6400	FM*†	OUTDOOR STORAGE FOR AGRI-CHEMICAL MATERIAL	1865.7	8'6" X 34' X 8'	13,584
AG8000	FM*†	OUTDOOR STORAGE FOR AGRI-CHEMICAL MATERIAL	2313.0	8'6" X 42' X 8'	15,301



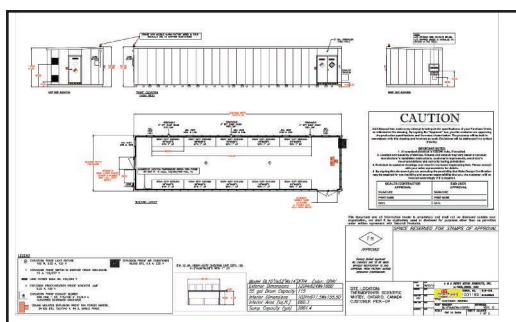
CUSTOMIZED BUILDINGS

SECURALL®

Our Sales and Engineering teams are ready to help you design a storage building for your special application.

While our standard models are designed for chemical storage, pesticide storage, and hazardous material storage, custom models can be designed for any purpose.

Our decades of fabrication experience enables us to construct the highest quality storage building for just about any storage need. So don't hesitate to ask; we can probably build it!



LET US HELP YOU DESIGN AN ALL STEEL BUILDING TO MEET YOUR SPECIFIC NEEDS!

CUSTOM AND STAINLESS STEEL CABINET MODELS

SECURALL®

FEATURES

Cabinets can be constructed to comply with both NFPA and OSHA regulations

Cabinets can be made in almost any size or shape; example: To fit under hoods, on top of counters, free standing or wall mounted

Select your optional equipment: doors, shelves, color or wording, kick recess and vents

Cabinets can be made for the storage of flammables, acids, oxidizers, water reactive chemicals, hazardous waste, poisons etc.

SECURALL also offers low contaminant stainless steel cabinets for storage in controlled environment applications

Constructed of 18 gauge 304 brushed stainless steel

MODEL # C-124-SS



SAFETY STORAGE CABINETS FOR FLAMMABLES IN SAFETY CANS



FEATURES

NEW! All models now include self-latching doors

Compact Storage Cabinets

Available in 4, 12, 15 and 16 gallon

Single door manual or self closing

Ideal for the storage of smaller containers of flammables, can be used on counter tops, workbenches or on the floor

Standard Storage Cabinets

Available in two-door manual or self-closing

Designed for storage of larger containers of flammable liquids.

Galvanized steel shelves, adjustable on 43/4" centers, support 350 pounds

Galvanized steel leveling legs

Internal and external welded construction

18 Gauge steel reinforced double wall panel construction with 11/2" air space

2" Raised leakproof sill

2" Vent with fire baffle and cap

Ground connection

Lead-free high gloss baked on powder finish

3 Point key lock doors

Compliance: OSHA 29; CFR 1910.106(d)3



* FACTORY MUTUAL APPROVAL
DESIGNED IN ACCORDANCE WITH
NFPA AND OSHA STANDARDS



MODEL # 1903
4 GALLON
EXTERIOR DIMENSIONS
(W X D X H)
(17 1/2 X 18 X 22 1/2)"



MODEL # 1924
12 GALLON
EXTERIOR DIMENSIONS
(W X D X H)
(23 X 18 X 35)"

MODEL # 1947
45 GALLON
STANDARD: 2 SHELVES
EXTERIOR DIMENSIONS
(W X D X H)
(43 X 18 X 65)"



MODEL # 1992
90 GALLON,
STANDARD: 2 SHELVES
EXTERIOR DIMENSIONS
(W X D X H)
(43 X 34 X 65)"



MODEL # MANUAL	MODEL # SELF-CLOSING	DESCRIPTION	#SHELVES	W X D X H	MAXIMUM WEIGHT	SLIDING SELF-CLOSING
1904	1903	4 GALLON	1	17 1/2" X 18" X 22 1/2"	70 LBS.	-
1925	1924	12 GALLON	1	23" X 18" X 35"	135 LBS.	-
ADD 15	ADD 14	15GALLON	OPTIONAL	43" X 18" X 22 1/4"	145 LBS.	-
1906	1905	16 GALLON	1	23" X 18" X 44"	150 LBS.	-
1971	1970	22 GALLON	1	35" X 22" X 35"	215 LBS.	-
1976	1975	24 GALLON	3	43" X 12" X 44"	235 LBS.	-
1923	2310	24 GALLON	3	23" X 18" X 65"	270 LBS.	-
1932*	3010*	30 GALLON	1	43" X 18" X 44"	257 LBS.	1930*
1947*	4510*	45 GALLON	2	43" X 18" X 65"	353 LBS.	1945*
1946*	4610*	48 GALLON	3	23" X 34" X 65"	370 LBS.	-
1962*	6010*	60 GALLON	2	31 1/4" X 31 1/4" X 65"	364 LBS.	-
1992*	9010*	90 GALLON	2	43" X 34" X 65"	485 LBS.	-



PAINT AND INK CABINETS



FEATURES

Available in red or yellow

Recommended for print shops and auto paint and body shops for safely and securely storing and organizing paint and ink cans

Available in red and yellow with additional shelves to maximize storage space

Sizes all based on the number of one gallon paint containers they will hold

Galvanized steel shelves, adjustable on 4 3/4" centers, support 350 pounds

Galvanized steel leveling legs

Internal and external welded construction

18 Gauge steel double wall panel construction with 1 1/2" air space

2" raised leakproof sill

2" vents with fire baffles and caps

Ground connection

Compliance: OSHA 29 CFR 1910.106(d)3



MODEL # YPI-62
96 GALLON
EXTERIOR DIMENSIONS
(W X D X H)
(31 1/4" X 31 1/4" X 65")



MODEL # YPI-32
40 GALLON
EXTERIOR DIMENSIONS
(W X D X H)
(43" X 18" X 44")

YELLOW - PAINT AND INK AVAILABLE IN YELLOW OR RED

DESCRIPTION	W X D X H	SLIDING	MANUAL CLOSE	SELF-CLOSING	#SHELVES	SHELF DEPTH	MAXIMUM WEIGHT
30 GALLON	43" X 12" X 65"	-	YPI-77	YPI-7710	5	8 3/4"	320 LBS.
40 GALLON	43" X 18" X 44"	YPI-30*	YPI-32*	YPI-3010*	3	14 3/4"	281 LBS.
60 GALLON	43" X 18" X 65"	YPI-45*	YPI-47*	YPI-4510*	5	14 3/4"	389 LBS.
96 GALLON	31 1/4" X 31 1/4" X 65"	YPI-60*	YPI-62*	YPI-6010*	5	28"	412 LBS.

MODEL # PI-47
60 GALLON
EXTERIOR DIMENSIONS
(W X D X H)
(43 X 18 X 65)"



MODEL # PI-32
40 GALLON
EXTERIOR DIMENSIONS
(W X D X H)
(43 X 18 X 44)"



Note: To order red cabinets remove the "Y" from the part number



* FACTORY MUTUAL APPROVAL
DESIGNED IN ACCORDANCE WITH
NFPA AND OSHA STANDARDS

MAXIMUM STORAGE QUANTITIES FOR CABINETS

LIQUID CLASS	MAXIMUM STORAGE CAPACITY
FLAMMABLE/CLASS I	60 GAL.
COMBUSTIBLE/CLASS II	60 GAL.
COMBUSTIBLE/CLASS III	120 GAL.
COMBINATION OF CLASSES	120 GAL.*

* Not more than 60 gallons may be Class I and Class II liquids. No more than 120 gallons of Class III liquids may be stored in a storage cabinet, according to OSHA 29 CFR 1910.106(d)(3) and NFPA 30 Section 4-3-1

Note: Not more than three such cabinets may be located in a single fire area, according to NFPA 30 Section 4-3-1.

Provide adequate facilities for the storage of flammables, corrosives, pesticides or paint and ink products. Compliance: OSHA 29 CFR 1910.106(d)3



ACID AND CORROSIVE CABINETS



FEATURES

Special corrosive resistant powder finish on all internal and external surfaces, including shelves for longer cabinet life

Standard polyethylene trays fit over shelves and in the cabinet bottom, containing small spills and providing extra corrosion protection

All cabinets feature baked on powder coat finish

Not recommended for use with Sulfuric, Nitric or Hydrochloric Acid. (The Eagle Polyethylene cabinets are suitable for use with these acids)

MODEL # CRA-32
30 GALLON
EXTERIOR DIMENSIONS
(H X W X D)
(43 X 18 X 44)"



MODEL # CRA-47
45 GALLON
EXTERIOR DIMENSIONS
(H X W X D)
(43 X 18 X 65)"



* FACTORY MUTUAL APPROVAL
DESIGNED IN ACCORDANCE WITH
NFPA AND OSHA STANDARDS

BLUE ACID CORROSIVE CABINETS

DESCRIPTION	W X D X H	SLIDING	MANUAL CLOSE	SELF-CLOSING	#SHELVES	SHELF DEPTH	MAXIMUM WEIGHT
4 GALLON	17 1/2" X 18" X 22 1/2"	-	CRA-1904	CRA-1903	1	14 3/4"	80 LBS.
12 GALLON	23" X 18" X 35"	-	CRA-1925	CRA-1924	1	14 3/4"	135 LBS.
15 GALLON	43" X 18" X 22 1/4"	-	ADD-CRA	ADD-CRA-14	OPTIONAL	14 3/4"	148 LBS.
16 GALLON	23" X 18" X 44"	-	CRA-1906	CRA-1905	1	14 3/4"	150 LBS.
22 GALLON	35" X 22" X 35"	-	CRA-71**	CRA-70**	1	18 3/4"	215 LBS.
24 GALLON	23" X 18" X 65"	-	CRA-23	CRA-2310	3	14 3/4"	270 LBS.
30 GALLON	43" X 18" X 44"	CRA-30*	CRA-32*	CRA-3010*	1	14 3/4"	257 LBS.
45 GALLON	43" X 18" X 65"	CRA-45*	CRA-47*	CRA-4510*	2	14 3/4"	353 LBS.
60 GALLON	31 1/4" X 31 1/4" X 65"	CRA-60*	CRA-62*	CRA-6010*	2	28"	364 LBS.

POLYETHYLENE ACID CABINETS



FEATURES

Suitable for use with sulphuric, hydrochloric and nitric acid

100% polyethylene for excellent resistance to harmful acid vapors and spills

Available in 4 gallon Benchtop, 22 gallon Under-Counter Storage and 44 gallon Cabinet with independent upper and lower compartments, allowing segregation of reactive chemicals

All cabinets feature internal sump capacities of at least 1 gallon

Adjustable poly shelves

Storage for smaller containers in the doors

Lockable doors

2-2" poly vents with caps

Available in Flat Blue and White with a smooth finish for ease of cleaning

1 gallon sump capacity on top
Center partition divides each side
Integral handles and locking tabs
Smooth finish for easy cleaning

Lockable to provide additional security

2 - 2" poly vents and covers

Drip edge on each door to keep small spills in cabinet



BENCH TOP
STORAGE CABINETS
MODEL # CRA-P04
4 GALLON
EXTERIOR
DIMENSIONS
(H X W X D)
(18 X 18 X 22)"

4-poly leveling legs

Recessed front base

POLY CABINETS

DESCRIPTION	W X D X H	BLUE	WHITE	#SHELVES	DEPTH	WEIGHT
4 GALLON	18" X 18" X 22"	CRA-P04	CRA-P04W	1	12"	35 LBS.
22 GALLON	35" X 22" X 36"	CRA-P22**	CRA-P22W**	2	12"	95 LBS.
44 GALLON	35" X 22" X 65"	CRA-P44**	CRA-P44W**	4	12"	130 LBS.

**CRA-P22/P44 have vents on the back. CRA-P44 has 4 total vents.



CABINETS FOR THE STORAGE OF HAZARDOUS AND FLAMMABLE DRUMS



FEATURES

Choice of horizontal or vertical drum storage

Available for either one or two drums

Convenient half shelf for additional storage space
(for accessories or containers)

Drum supports

Large Flammable - Keep Fire Away Labels

Hazardous Cabinets come with
Hazardous Waste labels

Options

Drum rollers and drum cabinet ramp
for easy drum handling

MODEL # 1955
110 GALLON
EXTERIOR DIMENSIONS
(W X D X H)
(58 X 31 1/2 X 65)"

MODEL # 1928
55 GALLON
EXTERIOR DIMENSIONS
(W X D X H)
(31 1/4 X 48 1/4 X 50)"

OPTIONAL:
DOLLY - MODEL #1918



INCLUDED: 2 ROLLERS - MODEL #1920



* FACTORY MUTUAL APPROVAL
DESIGNED IN ACCORDANCE WITH
NFPA AND OSHA STANDARDS

CABINETS FOR THE STORAGE OF HAZARDOUS AND FLAMMABLE DRUMS

DESCRIPTION	W X D X H	SLIDING	MANUAL CLOSE	SELF-CLOSING	SHELVES #	SHELF DEPTH	MAXIMUM WEIGHT
55 GALLON	31 1/4" X 31 1/4" X 65"	-	1926*	2610*	1	14 3/4"	350 LBS.
55 GALLON	31 1/4" X 48 1/4" X 50"	-	1928	2810	-	-	400 LBS.
110 GALLON	58" X 31 1/2" X 65"	-	1955*	5510*	1	14 3/4"	575 LBS.
55 GALLON	31 1/4" X 31 1/4" X 65"	-	HAZ1926*	HAZ2610*	1	14 3/4"	350 LBS.
110 GALLON	58" X 31 1/2" X 65"	-	HAZ1955*	HAZ5510*	1	14 3/4"	575 LBS.
60 GALLON	43" X 34" X 65"	-	HAZ1992*	HAZ9010*	1	14 3/4"	525 LBS.

* COMES STANDARD WITH ROLLER KIT

ACCESSORIES

MODEL NO.	DESCRIPTION	W X D X H	MAXIMUM WEIGHT
1918	DOLLY FOR 1928	-	31 LBS.
1920	2" ROLLERS	24" X 24" X 2"	50 LBS.
1957	DRUM CABINET RAMP 1000LB.	23 1/4" x 26 1/4" x 4 1/4"	28 LBS.
1994	ROLLER KIT FOR #HAZ1992 AND #HAZ9010	20" X 30" X 2"	45 LBS.

COMPLIANCE

Not more than 60 gallons may be
Class I and Class II liquids.

OSHA 29 CFR
1910.106(d)(3) and NFPA 30 Section 4-3.1



MODEL # 1957 RAMP
1,000 LB. CAPACITY
EXTERIOR DIMENSIONS
(H X W X D)
(23 1/4 X 26 1/4 X 4 1/4)"

MODEL # HAZ1926
55 GALLON
EXTERIOR DIMENSIONS
(W X D X H)
(31 1/4 X 31 1/4 X 65)"



PESTICIDE CABINETS



FEATURES

Provide needed protection for companies who specialize in lawn care, golf course management, agricultural interests or who handle and store pesticides and poisons

Galvanized steel shelves, adjustable on 4 3/4" centers, support 350 pounds

Galvanized steel leveling legs

Internal and external welded construction

18-gauge steel double wall panel construction with 1 1/2" air space

2" raised leakproof sill

2" vent with fire baffle and cap

Ground connection

Lead-free high gloss baked on powder finish

3 point key lock doors

Large Flammable Keep Fire Away and PESTICIDES label.

MODEL # PEST-47
45 GALLON
EXTERIOR DIMENSIONS (W X D X H)
(43 X 18 X 65)"

MODEL # PEST-32
30 GALLON
EXTERIOR DIMENSIONS (W X D X H)
(43 X 18 X 44)"



* FACTORY MUTUAL APPROVAL
DESIGNED IN ACCORDANCE WITH
NFPA AND OSHA STANDARDS

PESTICIDE CABINETS

DESCRIPTION	W X D X H	SLIDING	MANUAL CLOSE	SELF-CLOSING	#SHELVES	SHELF DEPTH	MAXIMUM WEIGHT
12 GALLON	23" X 18" X 35"		PEST 25	PEST 24	1	14 3/4"	135 LBS.
30 GALLON	43" X 18" X 44"	-	PEST 32*	PEST 3010*	1	14 3/4"	259 LBS.
45 GALLON	43" X 18" X 65"		PEST 47*	PEST 4510*	2	14 3/4"	351 LBS.
55 GALLON	31 1/4" X 31 1/4" X 65"		PEST 26*	PEST 2610*	1	14 3/4"	350 LBS.
60 GALLON	31 1/4" X 31 1/4" X 65"	-	PEST 62*	PEST 6010*	2	28"	363 LBS.
110 GALLON	58" X 31 1/2" X 65"	-	EST 1955	PEST 5510	1	14 3/4"	575 LBS.

POLY PESTICIDE CABINETS



FEATURES

Constructed of 100% polyethylene for excellent resistance to harmful vapors and spills

Available in 4 gallon Benchtop and 22 gallon

Internal and top sump capacities of at least 1 gallon

Adjustable poly shelves

Storage for smaller containers in the doors

Lockable doors

2-2" poly vents with caps

Available in Flat Green in a smooth finish for ease of cleaning

MODEL #PEST-P04
4GALLON
EXTERIOR DIMENSIONS
(W X D X H)
(18 X 18 X 22)"



MODEL # PEST-P22
22 GALLON
EXTERIOR DIMENSIONS
(W X D X H)
(35 X 22 X 36)"



POLY PESTICIDE CABINETS

MODEL NO.	DESCRIPTION	W X D X H	#SHELVES	DEPTH	WEIGHT
PEST-P04	4 GALLON	18" X 18" X 22"	1	12"	35 LBS.
PEST-P22	22 GALLON	35" X 22" X 36"	2	12"	95 LBS.



CABINET ACCESSORIES, SHELVES & PARTS



MODEL #1950/1951 BONDING WIRES (3')
MODEL #1953 BRASS HORIZONTAL DRUM VENT
MODEL #1974B BRASS FAUCET



MODEL #1910G SELF CLOSING ADAPTOR KIT



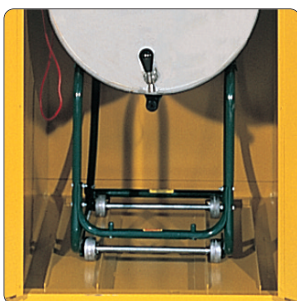
MODEL #1934/35 CABINET DOLLY CARTS



MODEL #1934 WITH 1925 CABINET DOLLY CARTS



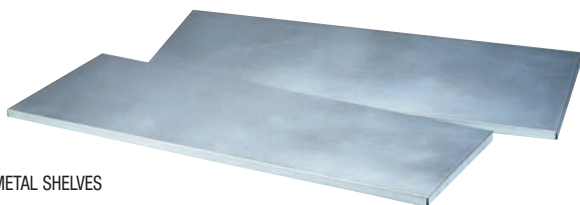
1916G SHELF DIVIDERS



MODEL #1918 HORIZONTAL DRUM CRADLE



MODEL #3045 KIT POLY TRAYS



MODEL #1915 METAL SHELVES

MODEL NO.	DESCRIPTION
1902	METAL SHELF FOR 4 GALLON CABINETS
1908G	3" DIVIDER FOR 60 GALLON CABINETS
1909G	5" DIVIDER FOR 60 GALLON CABINETS
1910G	SELF CLOSING ADAPTOR KIT FOR 15, 30, 45 GALLON CABINETS
1911	METAL SHELF FOR 60 GALLON CABINETS
1912G	SELF CLOSING KIT FOR ALL SINGLE DOOR 4, 12, 16 AND 24 GAL. CABINETS
1915	METAL SHELF FOR 15, 30 & 45 GALLON CABINETS
1916G	3" DIVIDER FOR 4, 12, 15, 16, 30, 45 GAL. CABINETS
1917G	5" DIVIDER FOR 4, 12, 15, 16, 30, 45 GAL. CABINETS
1918	CRADLE FOR HORIZONTAL DRUM CABINETS
1919	METAL SHELF FOR 12, 16 & 24 GALLON CABINETS
1920	ROLLER CONVEYOR
1921	METAL SHELF FOR HAZ1926 & HAZ2610
1922	METAL SHELF FOR HAZ 1955
1934	CABINET DOLLY CART FOR 12 & 16 GALLON CABINETS
1935	CABINET DOLLY CART FOR 15 & 30 GALLON CABINETS
1950	GROUNDING WIRE W/ALLIGATOR CLIPS 36" LENGTH
1951	BONDING WIRE W/C CLIP 36" LENGTH
1953	BRASS HORIZONTAL DRUM VENT
1957	DRUM CABINET RAMP
1966G	SELF CLOSING ADAPTOR KIT FOR 60 GALLON FLAMMABLE, PI 60 SERIES & VERTICAL ONE DRUM CABINET
1967G	SELF CLOSING ADAPTOR KIT FOR 2 DRUM CABINET
1972	METAL SHELF FOR UNDER COUNTER CABINETS
1977	METAL SHELF FOR WALL MOUNT CABINETS
1978G	SELF CLOSING ADAPTOR KIT FOR UNDER COUNTER CABINET
1979G	SELF CLOSING ADAPTOR KIT FOR WALL MOUNT & 90 GALLON CABINETS
CRA-1901	POLY TRAY FOR 4 GALLON CABINETS
CRA-1902	COATED METAL SHELF FOR 4 GALLON CABINETS
CRA-1907	POLY BOTTOM TRAY FOR 12, 16 & 24 GALLON CABINETS
CRA-1908	POLY SHELF TRAY FOR 12, 16 & 24 GALLON CABINETS
CRA-1909	COATED METAL SHELF FOR 12, 16 & 24 GALLON CABINETS
CRA-1912	POLY BOTTOM TRAY FOR 15, 30 & 45 GALLON CABINETS
CRA-1913	POLY SELF TRAY FOR 15, 30 & 45 GALLON CABINETS
CRA-1914	COATED METAL SHELF FOR 15, 30 & 45 GALLON CABINETS
CRA-1916	POLY BOTTOM TRAY FOR 60 GALLON CABINETS
CRA-1917	POLY SHELF TRAY FOR 60 GALLON CABINETS
CRA-1918	COATED METAL SHELF FOR 60 GALLON CABINETS
CRA-72	COATED METAL SHELF FOR CRA-70 & CRA-71
CRA-PS04	POLY CABINET SHELF FOR 4 GALLON POLY CABINET
CRA-PS22	POLY CABINET SHELF FOR 22 & 44 GALLON POLY CABINETS
3045	KIT UNIVERSAL POLY TRAY KIT 3 TRAYS
C-80	FUSIBLE LINK ROUND SLIDING DOOR MODELS ONLY
C-80N	FUSIBLE LINK RECTANGULAR SLIDING DOOR MODELS ONLY
C-82N	DOOR LOCK WITH KEYS - ALL MODELS
C-83N	KEY SET (2 KEYS)
C-89-1	DOOR LOCK ASSEMBLY FOR 30 GALLON CABINETS (W/RODS)
C-89-2	DOOR LOCK ASSEMBLY FOR 45 & 60 GALLON CABINETS (W/RODS)



WB TYPE I & TYPE II SAFETY CANS



FEATURES

Store and Pour Flammables with approved WB Safety Cans

A Safety Can is the approved container for storage and handling of flammable and combustible liquids to satisfy OSHA and NFPA requirements

Roll-seam welded 24 gauge terne steel to pass 25 psi-hydrostatic test

Spring loaded lid relieves internal pressure at 5 psi yet retains full can of liquid when inverted

Every WB can must pass an underwater pressure test before painting and packaging

Flame Arrestor protects the flammable contents of the can from exterior sources of ignition

One-hand grip-to-open pour spouts

Integral pressure-relief on Type 11 pour spouts

Flame Arrestors

Every WB safety can is equipped with a tested and approved flame arrestor

The flame arrestor protects the flammable contents of the can from exterior sources of ignition



* FACTORY MUTUAL APPROVAL
DESIGNED IN ACCORDANCE WITH
NFPA AND OSHA STANDARDS



LISTED

The cans below are available in Blue for the storage of KerosEne and Yellow for the storage of Diesel. When ordering, add a "B" or "Y" at the end of the model number. UL, ULC and FM Approved.

HAZID

**NEW
Design!**



TYPE I - SAFETY STORAGE CANS



TYPE II - FILLING SAFETY CANS



MODEL#PPF-8
POLY POINT & POUR FUNNEL

TYPE I – SAFETY STORAGE CANS – NO FLEXIBLE SPOUT

MODEL NO.	DESCRIPTION	PACKED	SHIPPING WEIGHT	
WB100	1 GALLON SAFETY CAN (3.8 LITRES)	6 TO CTN.	32 LBS.	14.5 KG.
WB101	1 IMP. SAFETY CAN (4.6 LITRES)	6 TO CTN.	35	15.9
WB102	2 GALLON SAFETY CAN (7.6 LITRES)	2 TO CTN.	7	3.18
WB103	3 GALLON SAFETY CAN (11.4 LITRES)	1 TO CTN.	8	3.6
WB105	5 GALLON SAFETY CAN (18.9 LITRES)	1 TO CTN.	9	4.0
WB106	5 IMP. SAFETY CAN (22.7 LITRES)	1 TO CTN.	10	4.5

TYPE II – FILLING SAFETY CANS – FLEXIBLE SPOUT

WB200	1 GALLON SAFETY CAN (3.8 LITRES)	6 TO CTN.	38 LBS.	17.2 KG.
WB201	1 IMP. SAFETY CAN (4.6 LITRES)	6 TO CTN.	44	2.0
WB202	2 GALLON SAFETY CAN (7.6 LITRES)	2 TO CTN.	10	4.5
WB203	3 GALLON SAFETY CAN (11.4 LITRES)	1 TO CTN.	10	4.5
WB205	5 GALLON SAFETY CAN (18.9 LITRES)	1 TO CTN.	12	5.4
WB206	5 IMP. SAFETY CAN (22.7 LITRES)	1 TO CTN.	12	5.4

TYPE II – ADDITIONAL POUR SPOUTS

R-3409	5/8" I.D. X 9"	1	.5	
PPF-8	POLY POINT & POUR FUNNEL	1	.5	

ULC, FM OSHA, NFPA



TYPE I & II SAFETY CANS



FEATURES

Type I Safety Cans

Galvanized Type I cans meet OSHA and NFPA Code 30 requirements

Type I cans are UL and ULC listed and FM approved for safe handling and storage of gasoline and other flammable liquids

Cans feature environmentally friendly Lead Free Technology

Constructed of 24-gauge hot dipped galvanized steel

MODEL#UI-50-S



MODEL#UI-50-SY



MODEL#UI-50-SB



MODEL#UI-20-FS



MODEL#UI-2-S



MODEL#1537



MODEL#1535



MODEL#1535



MODEL#1315



MODEL#1313

MODEL#U2-51-S
TYPE II CAN



MODEL#U2-26-S
TYPE II CAN

HDPE & Stainless Type I Polyethylene Safety Cans

Impervious to many liquid chemicals, acids, caustics, solvents and corrosives

Help reduce the danger of explosions

High density polyethylene cans are dent and puncture resistant and feature corrosion resistant stainless steel fittings

Type II Galvanized Steel Safety Cans

Safety cans feature two openings, one with a pressure-relief spring closing lid for filling, one with an actuated pour valve with a flexible metal spout for safer controlled dispensing

Filler spout and flame arrestors in both openings are non-sparking brass designed for flashback protection

Cans are FM, UL and ULC approved and meet OSHA and NFPA Code 30 requirements

THE ABOVE CANS ARE AVAILABLE IN BLUE FOR THE STORAGE OF KEROSENE AND YELLOW FOR THE STORAGE OF DIESEL. WHEN ORDERING, ADD A "B" OR "Y" AT THE END OF THE MODEL NUMBER. UL, ULC AND FM APPROVED.

TYPE I SAFETY CANS

CAPACITY	DIMENSIONS	W/O FUNNEL	W/FUNNEL	WEIGHT
1 QUART	5 1/4" X 8"	UI-2-S	-	1.96 LBS.
2 QUARTS	6 3/4" X 8 3/4"	UI-4-S	-	2.59 LBS.
1 GALLON	9" X 8"	UI-10-S	UI-10-FS	3.52 LBS.
2 GALLONS	11 1/4" X 9 1/2"	UI-20-S	UI-20-FS	5.25 LBS.
5 GALLONS	12 1/2" X 13 1/2"	UI-50-S	UI-50-FS	7.00 LBS.

TYPE II

CAPACITY	DIMENSIONS	7/8" SPOUT	5/8" SPOUT	WEIGHT
2 GALLONS	11 1/4" X 9 1/2"	U2-26-S	U2-26-SX5	8 LBS.
5 GALLONS	12 1/2" X 13 1/2"	U2-51-S	U2-51-SX5	10 LBS.

UL AND FM APPROVED.

TYPE I STAINLESS STEEL CANS

CAPACITY	DIMENSIONS	MODEL	WEIGHT
2 1/2 GALLONS	11 1/4" X 9 5/8"	1313	8 LBS.
5 GALLONS	11 1/4" X 15 7/8"	1315	10 LBS.

FM APPROVED.

TYPE I POLY LAB CANS

CAPACITY	DIMENSIONS	WHITE	RED	WEIGHT
3 GALLONS	12 1/2" X 13"	1535	1537	6 LBS.
5 GALLONS	12 1/2" X 17"	1541	1543	7 LBS.

FM APPROVED.



* FACTORY MUTUAL APPROVAL
DESIGNED IN ACCORDANCE WITH
NFPA AND OSHA STANDARDS



LISTED



SPECIALTY SAFETY CANS



FEATURES

Reduce the danger of explosions resulting from the ignition of vapors of flammable liquids

Available in coated metal, stainless steel and high density polyethylene for safe storage and handling of most chemical compounds

Faucet Safety Cans help control dispensing of flammable liquids into small capacity vessels with a variety of drip-free faucet styles

Compliance: OSHA 29CFR 1910.106, 1925.152 and NFPA Code 30



MODEL#1327
5 GALLONS



MODEL#1417
5 GALLONS



MODEL#1301
1 GALLON



MODEL#1401
1 GALLON



* FACTORY MUTUAL APPROVAL
DESIGNED IN ACCORDANCE WITH
NFPA AND OSHA STANDARDS



MODEL#1512
1/2 GALLON



MODEL#1513
1 GALLON



MODEL#1511
1 GALLON



MODEL#1511
1/2 GALLON

LAB CANS				
CAPACITY	DIMENSIONS	METAL RED	STAINLESS	WEIGHT
1 GALLON	6" X 8" X 13"	1401	1301	3.75 LBS.
POLYETHYLENE LAB CANS				
CAPACITY	DIMENSIONS	RED	WHITE	WEIGHT
1/2 GALLON	6" X 8 1/2" X 9 1/2"	1510	1512	1.50 LBS.
1 GALLON	6" X 8 1/2" X 13"	1511	1513	2.80 LBS.
FAUCET CANS				
CAPACITY	DIMENSIONS	BRASS	STAINLESS	WEIGHT
5 GALLONS	12 1/2" X 13 1/2"	1417*	-	12 LBS.
5 GALLONS	11 1/4" X 15 7/8"	-	1327*	9 LBS.

*1417 GALVANIZED; 1327 STAINLESS

DISPOSAL CANS



FEATURES

Provide an intermediate station for temporary storage of liquid chemical wastes

All cans are FM approved and feature wide 4" spout and cap that locks open to 80 degree angle for easy filling

All cans have a flame arrestor, a free-swing handle and auto vent cap

High Density Polyethylene Cans

Resistant to dents and punctures

Feature stainless steel fittings

Ideal for more aggressive chemicals & corrosives

Galvanized Steel cans

Ideal for disposal of flammable petroleum based wastes

Type 316 Stainless Steel cans

Recommended for use with most alcohols, ethers, aromatics, hydrocarbons and chlorinated hydrocarbon wastes



MODEL#1525
5 GALLONS



MODEL#1519
3 GALLONS



MODEL#1523
3 GALLONS



MODEL#1423
2 1/2 GALLONS



MODEL#1325
5 GALLONS



MODEL#1517
3 GALLONS



* FACTORY MUTUAL APPROVAL
DESIGNED IN ACCORDANCE WITH
NFPA AND OSHA STANDARDS

ALL DISPOSAL CANS FEATURE
STAINLESS FLAME ARRESTOR
UNLESS MARKED.

DISPOSAL CANS				
CAPACITY	DIMENSIONS	STAINLESS	GALVANIZED	WEIGHT
2 1/2 GALLONS	11 1/4" X 12"	1323	-	8 LBS.
5 GALLONS	11 1/4" X 18"	1325	-	10 LBS.
2 1/2 GALLONS	11 1/4" X 12"	-	1423*	8 LBS.
5 GALLONS	12 1/2" X 18"	-	1425*	10 LBS.
CAPACITY	DIMENSIONS	WHITE POLY	RED POLY	WEIGHT
3 GALLONS	12 1/2" X 14 1/2"	1517	1519	7 LBS.
5 GALLONS	12 1/2" X 18 1/2"	1523	1525	8 LBS.

* GALVANIZED FLAME ARRESTOR



BENCH & PLUNGER CANS



FEATURES

Eagle Safety Plunger Cans

Ideal for cleaning with flammable or volatile fluids

Feature brass flame arrestor dasher screens and pump assemblies and comply with OSHA standards

Available in galvanized steel and high density polyethylene for more aggressive solvents

Dispenses a small amount of liquid to easily moisten sponges or rags without messy or dangerous spills

DOT Transport Safety Cans

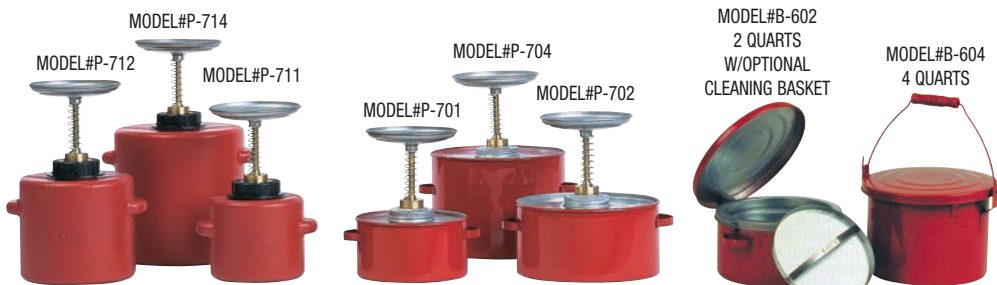
Help reduce the danger of explosion while dispensing flammable liquids through a flexible metal spout

Can has double-walled brass flame arrestors in filler opening and pour spout

MODEL#1215
5 GALLONS



* FACTORY MUTUAL APPROVAL
DESIGNED IN ACCORDANCE WITH
NFPA AND OSHA STANDARDS



PLUNGER CANS

CAPACITY	DIMENSIONS	METAL	WEIGHT	DIMENSIONS	POLY	WEIGHT
1 QUART	6 1/4" X 8"	P-701	2.34 LBS.	5 1/4" X 9 3/4"	P-711	2.00 LBS.
2 QUARTS	8" X 8 1/2"	P-702	3.00 LBS.	6 1/2" X 11"	P-712	3.00 LBS.
4 QUARTS	8" X 10 3/4"	P-704	3.67 LBS.	7 3/4" X 13"	P-714	4.00 LBS.

ALL ARE FM APPROVED AND FEATURE A 5 1/4" WIDE DASHER.

BENCH AND DAUB CANS

CAPACITY	MODEL NO.	DIAMETER	HEIGHT	WEIGHT
1/2 PINT	B-600-D	4 1/4"	3 1/2"	1.00 LB.
1 QUART	B-601	6 1/4"	3 5/8"	2.17 LBS.
2 QUARTS	B-602*	8"	4 1/4"	3.00 LBS.
4 QUARTS	B-604*	8"	6 1/2"	3.50 LBS.
6 QUARTS	B-606	7 3/4"	9 1/2"	3.67 LBS.
6 QUARTS	B-606-NL	7 3/4"	9 1/4"	3.67 LBS.
8 QUARTS	B-608	12"	7"	8.25 LBS.

PARTS CLEANING BASKET AVAILABLE AS NECESSARY (SHOWN AT RIGHT)

DOT TRANSPORT CANS

CAPACITY	DIMENSIONS	7/8" O.D. SPOUT	5/8" O.D. SPOUT	WEIGHT
5 GALLONS	12 1/2" X 15 3/4"	1215	1215-SX5	13 LBS.

OILY WASTE & BIOHAZARD CANS



FEATURES

Eagle Oily Waste Cans

Offer fire safe temporary storage of solvent, waste rags, shavings and other materials subject to spontaneous combustion

Available with foot lever

Polyethylene Oily Waste Cans won't rust or dent and are resistant to most chemical compounds

Polyethylene Biohazardous Waste Cans

Advise workers of potential biohazards and meet OSHA requirements for exposures to blood borne pathogens

MODEL #937-FL

MODEL #935-FL

MODEL #933-FL



MODEL #937FLY

MODEL #935FLY

MODEL #933FLY



MODEL #947BIO

MODEL #945BIO

MODEL #943BIO



* FACTORY MUTUAL APPROVAL
DESIGNED IN ACCORDANCE WITH
NFPA AND OSHA STANDARDS

POLY WASTE CANS

RED POLY	YELLOW POLY	CAPACITY	DIMENSIONS	BIO-HAZ	WEIGHT
933-FL	933-FLY	6 GALLONS	16 1/2" X 13 1/2" X 16"	943BIO	9 LBS.
935-FL	935-FLY	10 GALLONS	22" X 18" X 18"	945BIO	14 LBS.
937-FL	937-FLY	14 GALLONS	22" X 18" X 21"	947BIO	16 LBS.

*ALSO AVAILABLE IN BLACK - SPECIAL ORDER

**NEW
Product!**



SAFE SMOKERS



FEATURES

SafeSmoker™ & Butt Cans

Made of high density polyethylene with UV inhibitors, with a galvanized steel collection bucket inside

Design restricts oxygen to quickly extinguish burning butts

Top of container removes easily to access and empty internal bucket and keeps water out and eliminates waste smells

Eagle Butt Cans

Ideal for "smoking areas" inside or outside

Features poly tube and galvanized can base

Original Butt Cans

This all metal galvanized steel can is excellent for smoking areas in industrial settings



MODEL #
1206BLACK

MODEL #
1208BLACK



MODEL #1206BROWN



MODEL #1206BEIGE



MODEL #1206GRAY



MODEL #1206BLACK



* FACTORY MUTUAL APPROVAL
DESIGNED IN ACCORDANCE WITH
NFPA AND OSHA STANDARDS



MODEL #1208BROWN



MODEL #1208BEIGE



MODEL #1208GRAY



MODEL #1208BLACK



CONTAINER TOP REMOVES
EASILY TO EMPTY INTERNAL
GALVANIZED STEEL BUCKET



DECORATIVE SAFE SMOKERS

**NEW
Design!**

SAFESMOKER™ CIGARETTE RECEPTACLE

MODEL	DESCRIPTION	DIMENSIONS	WEIGHT
1208BEIGE	SAFESMOKER™-BEIGE	17 1/4" DIA. X 43 1/4" H	10 LBS.
1208BROWN	SAFESMOKER™-BROWN	17 1/4" DIA. X 43 1/4" H	10 LBS.
1208BLACK	SAFESMOKER™-BLACK	17 1/4" DIA. X 43 1/4" H	10 LBS.
1208GRAY	SAFESMOKER™-GRAY	17 1/4" DIA. X 43 1/4" H	10 LBS.
1206BEIGE	SAFESMOKER™-BEIGE	15 1/4" DIA. X 37 3/4" H	7 LBS.
1206BROWN	SAFESMOKER™-BROWN	15 1/4" DIA. X 37 3/4" H	7 LBS.
1206BLACK	SAFESMOKER™-BLACK	15 1/4" DIA. X 37 3/4" H	7 LBS.
1206GRAY	SAFESMOKER™-GRAY	15 1/4" DIA. X 37 3/4" H	7 LBS.

METAL/POLY BUTT CANS

CAPACITY	DIMENSIONS	YELLOW	BEIGE	WEIGHT
2 GALLONS	12" X 35"	1202	1202BEI	5 LBS.
5 GALLONS	12" X 40"	1205	1205BEI	7 LBS.

ORIGINAL BUTT CAN

CAPACITY	DIMENSIONS	YELLOW	BEIGE	WEIGHT
5 GALLONS	12" X 33"	1200YELLOW	1200BEIGE	7 LBS.



SECURITY CABINETS - INDUSTRIAL / COMMERCIAL / SECURITY STORAGE

SECURALL®

FEATURES

Rugged, all welded, 18 ga steel construction will provide years of service in both factory and office environments

EXCLUSIVE 1000 lb. capacity SUR-LOC easily adjustable steel shelving can be adjustable on 5" centers

Shelf braces gives extra reinforcement to the side walls to provide even more durability

Double wall cabinet doors feature full length piano hinges and a lockable flush mounted door handle for obstruction free, finger tip operation

3-point self-latching doors add even more convenient security

Shipped fully assembled and ready to use

Available in Beige or Gray



MODEL # SS184 BEIGE
EXTERIOR DIMENSIONS
(H X W X D)
(84 X 36 X 18)"



MODEL # SS184 GRAY
EXTERIOR DIMENSIONS
(H X W X D)
(84 X 36 X 18)"

Organize, store and protect your most valuable tools and materials with these quality Industrial/Commercial Storage Cabinets

GENERAL STORAGE SINGLE WALL CABINETS

MODEL NO.	DESCRIPTION	NO. OF SHELVES	CAPACITIES	EXTERIOR DIMENSIONS APPROX. (H X W X D) IN.	SHIPPING WEIGHT APPROX. (LBS.)
SS142	SELF-LATCH STANDARD 2-DOOR	2	15 CUBIC FEET	42 X 36 X 18	151
SS172	SELF-LATCH STANDARD 2-DOOR	4	27 CUBIC FEET	72 X 36 X 18	264
SS184	SELF-LATCH STANDARD 2-DOOR	4	31 CUBIC FEET	84 X 36 X 18	300
SS242	SELF-LATCH STANDARD 2-DOOR	2	21 CUBIC FEET	42 X 36 X 24	200
SS272	SELF-LATCH STANDARD 2-DOOR	4	36 CUBIC FEET	72 X 36 X 24	353
SS284	SELF-LATCH STANDARD 2-DOOR	4	42 CUBIC FEET	84 X 36 X 24	401

SECURITY STORAGE - WITH MEDECO HIGH SECURITY LOCK

SECURALL®

FEATURES

When you have a need for additional security these cabinets are designed to accommodate and protect your valuable or dangerous chemicals and other items from unauthorized use, fire and theft

Cabinets constructed of heavy 18 gauge steel with 1 1/2" air space throughout

Double swinging doors, plug welded full length piano hinges

Equipped with (MEDECO High Security) drill pick resistant lock, recessed into door to prevent breaking with a hammer or cutting chisel

Also ideal for office use



MODEL # H007
EXTERIOR DIMENSIONS
(H X W X D)
(65 X 34 X 18)"



MODEL # S5001
EXTERIOR DIMENSIONS
(H X W X D)
(65 X 34 X 18)"

GENERAL STORAGE DOUBLE WALL CABINETS OF HEAVY GAUGE STEEL AND HIGH SECURITY LOCK, HELP TO PREVENT UNAUTHORIZED USE

MODEL NO.	TEST LAB APPROVAL	DESCRIPTION	NO. OF SHELVES	EXTERIOR DIMENSIONS APPROX. (H X W X D) IN.	SHIPPING WEIGHT APPROX. (LBS.)
H007	*†	STORAGE OF VALUABLE CHEMICALS, DANGEROUS AND HAZARDOUS FLAMMABLES	4	65 X 34 X 18	303
S5001	*†	STORAGE OF OFFICE VALUABLES AND SHOP INSTRUMENTS. CARPET LINED SHELVES	4	65 X 34 X 18	303

H007 AND S5001 MODELS ARE AVAILABLE IN BEIGE OR GRAY-PLEASE SPECIFY WHEN ORDERING

*Complies with OSHA regulations. † All cabinets are designed in accordance with specifications set forth by the National Fire Protection Association



SECURITY CABINETS - FIRE RESISTANT DOUBLE WALLED



Model BR - Closed storage cabinet to secure materials or valuables
(Manual Close Doors)

FEATURES

All welded double wall 18 gauge construction with 1-1/2" insulating air space

Lockable flush handle with 2 sets of keys

Doors are double walled, 14 gauge outside & 18 gauge inside

Doors have 3 point locking system and radius edges

4" heavy duty weld hinges with brass pins

Adjustable leveling feet

Powder coated gray finish (see options).

Steel shelves adjust on 2-1/2" centers.

Manual close doors (open to full 180°)

Options:

Putty Powder Coat Finish - Code PP



MODEL BR



OPTIONAL PUTTY
COLOR SHOWN

MODEL BR - MANUAL CLOSE

Capacity (cu ft)	Catalog No.	Size (in) W x D x H	# Shelves	# Doors	Wgt. (lbs)
35" HIGH					
8	BR8	23 X 18 X 35	2	1	150
12	BR12	34 X 18 X 35	2	2	190
16	BR16	23 X 34 X 35	2	1	210
44" HIGH					
10	BR10	23 X 18 X 44	3	1	180
14	BR14	34 X 18 X 44	3	2	230
19	BR19	43 X 18 X 44	3	2	280
20	BR20	23 X 34 X 44	3	1	290
65" HIGH					
15	BR15	23 X 18 X 65	4	1	258
23	BR23	34 X 18 X 65	4	2	348
29	BR29	43 X 18 X 65	4	2	424
30	BR30	23 X 34 X 65	4	1	384
43	BR43	34 X 34 X 65	4	2	474
55	BR55	43 X 34 X 65	4	2	544
75	BR75	59 X 34 X 65	4	2	666

SECURITY CABINETS - FIRE RESISTANT DOUBLE WALLED



Model BX - Closed storage cabinet to secure materials or valuables
(SELF CLOSING BI-FOLD Doors)

FEATURES

All welded double wall 18 gauge construction with 1-1/2" insulating air space

Lockable flush handle with 2 sets of keys

Doors are double walled, 14 gauge outside & 18 gauge inside

Doors have 3 point locking system and radius edges

4" heavy duty weld hinges with brass pins

Adjustable leveling feet

Powder coated gray finish (see options)

Steel shelves adjust on 2-1/2" centers

Bi-fold door manual close

Options:

Putty Powder Coat Finish - Code PP



MODEL BX



MODEL BX - BI-FOLD

Capacity (cu ft)	Catalog No.	Size (in) W x D x H	# Shelves	Wgt. (lbs)
19	BX19	43 X 18 X 44	3	278
29	BX29	43 X 18 X 65	4	396
43	BX43	34 X 34 X 65	4	480
55	BX55	43 X 34 X 65	4	550



SECURITY STORAGE CABINETS - HEAVY DUTY WELDED - SOLID DOOR



Models DL, DS, HG - Durable closed storage cabinets to secure materials and valuables

FEATURES

All welded 14 gauge construction

Lockable doors, with lever handle, 3 point locking system.
Doors open 180° (padlock not included)

Shelves adjust on 2-1/2" centers

Powder coated gray finish

Specifications:

Model DL - Heavy Duty

Includes four 14 gauge reinforced shelves with 1-1/2" lips

Overall height - 74"

1000 lbs Shelf Cap

Model DS - Super Heavy Duty

Includes four 14 gauge reinforced shelves with 2" lips, corners welded, and return bends for extra strength

4" high legs

Legs allow moving unit with fork lift truck

Overall height - 78"

1800 lbs Shelf Cap

Model HG

Includes two 14 gauge reinforced shelves with 1-1/2" lips

Locking drawers (5"h x 16"w x 20"d) with 2 keys

4" high legs

Legs allow moving of unit with fork lift truck

Overall height - 78"

1000 lbs Shelf Cap

Options:

Extra Shelf - Code RT (Models DL & HG only)

Extra Shelf - Code ET (Model DS only)



MODEL DL SHOWN
1,000 LB CAPACITY PER SHELF

MODEL DL - SOLID DOORS		
WxDxH (in)	Cat. No.	Wgt. (lbs)
18 X 36 X 74	DL136	320
18 X 48 X 74	DL148	392
18 X 60 X 74	DL160	464
24 X 36 X 74	DL236	370
24 X 48 X 74	DL248	450
24 X 60 X 74	DL260	530



MODEL DS SHOWN
1,800 LB CAPACITY PER SHELF

MODEL DS - SUPER HEAVY DUTY SHELVES - SOLID DOORS		
WxDxH (in)	Cat. No.	Wgt. (lbs)
18 X 36 X 78	DS136	330
18 X 48 X 78	DS148	404
18 X 60 X 78	DS160	476
24 X 36 X 78	DS236	380
24 X 48 X 78	DS248	462
24 X 60 X 78	DS260	544



MODEL HG248 SHOWN
1,000 LB CAPACITY PER SHELF

MODEL HG - STORAGE CABINET WITH DRAWERS			
WxDxH (in)	Cat. No.	# of Drawers	Wgt. (lbs)
24 X 36 X 78	HG236	3	430
24 X 48 X 78	HG248	6	586
24 X 60 X 78	HG260	9	734

HEAVY DUTY OFFICE SUPPLY CABINETS



FEATURES

Heavy duty cabinets

Safe storage for backup documents and office supplies from theft and fire

Double wall 18 gauge steel

4 Painted shelves

3 Point security lock



* FACTORY MUTUAL APPROVAL
DESIGNED IN ACCORDANCE WITH
NFPA AND OSHA STANDARDS



MODEL # 1947-4BEI
45 GALLON
EXTERIOR DIMENSIONS
(W X D X H)
(43 X 18 X 65)"

MODEL #	SELF-CLOSING	DESCRIPTION	#SHELVES	W X D X H	SLIDING SELF CLOSING	MAXIMUM WEIGHT
1947-4BEI*	-	45 GALLON	4	43" X 18" X 65"	-	371 LBS.
1947-4GRAY*	-	45 GALLON	14	43" X 18" X 65"	-	371 LBS.



SECURITY STORAGE CABINETS - HEAVY DUTY WELDED - CLEARVIEW DOOR



Durable closed storage, with clearview of contents, to secure materials and valuables

FEATURES

All welded 14 gauge construction

Clearview door panels are 13 gauge expanded mesh

Lockable doors, with lever handle, 3 point locking system. Doors open 180° (padlock not included)

Shelves adjust on 2-1/2" centers

Powder coated gray finish

Specifications:

Model DJ - Heavy Duty

Includes four 14 gauge shelves with 1-1/2" lips

Overall height - 74"

1000 lbs Shelf Cap

Model DM - Super Duty

Includes four 14 gauge reinforced shelves with 2" lips, corners welded, and return bends for extra strength

4" high legs

Legs allow moving unit with fork lift truck

Overall height - 78"

1800 lbs Shelf Cap

Model HU

Includes two 14 gauge reinforced shelves with 1-1/2" lips

Locking drawers (5"h x 16"w x 20"d) with 2 keys

4" high legs

Legs allow moving unit with fork lift truck

Overall height - 78"

1000 lbs Shelf Cap

Options:

Extra Shelf - Code RT (Models DJ & HU only)

Extra Shelf - Code ET (Model DM only)



MODEL DJ148 SHOWN
1,000 LB CAPACITY PER SHELF

MODEL DJ - CLEARVIEW DOORS

WxDxH (in)	Cat. No.	Wgt. (lbs)
18 X 36 X 74	DJ136	306
18 X 48 X 74	DJ148	368
18 X 60 X 74	DJ160	430
24 X 36 X 74	DJ236	354
24 X 48 X 74	DJ248	426
24 X 60 X 74	DJ260	496



MODEL DM148 SHOWN
1,800 LB CAPACITY PER SHELF

MODEL DM - SUPER HEAVY DUTY SHELVES - CLEARVIEW DOORS

WxDxH (in)	Cat. No.	Wgt. (lbs)
18 X 36 X 78	DM136	316
18 X 48 X 78	DM148	380
18 X 60 X 78	DM160	442
24 X 36 X 78	DM236	364
24 X 48 X 78	DM248	438
24 X 60 X 78	DM260	510



MODEL HU248 SHOWN
1,000 LB CAPACITY PER SHELF

MODEL HU - CLEARVIEW STORAGE CABINET WITH DRAWERS

WxDxH (in)	Cat. No.	# of Drawers	Wgt. (lbs)
24 X 36 X 78	HU236	3	416
24 X 48 X 78	HU248	6	562
24 X 60 X 78	HU260	9	700



SECURITY STORAGE CABINETS - PLASTIC BIN & SHELF - WELDED - CLEARVIEW DOORS



Durable closed storage, with clearview doors for storage of valuable parts

FEATURES

All welded 14 gauge construction

Clearview door panels are 13 gauge expanded mesh

Full louvered panel - back wall (Model DK only)

Yellow plastic bin sizes:

Big Bins (16-1/2" w x 14-3/4" d x 7" h)

Large Bins (8-1/4" w x 11" d x 7" h)

Lockable doors, with lever handle, 3 point locking system. Doors open 180° (padlock not included)

4" high legs.

Legs allow moving unit with fork lift truck.

Overall height - 78"

Powder coated gray finish.



MODEL DK248 SHOWN

MODEL DK - PLASTIC BINS - CLEARVIEW DOORS

WxDxH (in)	Cat. No.	No. of Bins		Wgt. (lbs)
		Big	Large	
24 X 36 X 78	DK236	18	0	336
24 X 48 X 78	DK248	18	9	404
24 X 60 X 78	DK260	27	0	512

Model GF:

Locking drawers (5" h x 16" w x 20" d) with 2 keys

Model DY:

Includes two 14 gauge reinforced shelves with 1-1/2" lips (1,000 lb capacity per shelf)

Full shelf rails allow shelves to be adjusted on 2-1/2" centers

Options:

Extra Shelf - Code RT (Model DY only)

Extra Big Bins - Code RG

Extra Large Bins - Code RB



MODEL GF248 SHOWN

MODEL GF - PLASTIC BINS STORAGE CABINET WITH DRAWERS

WxDxH (in)	Cat. No.	No. of Bins		Wgt. (lbs)
		Big	Large	
24 X 36 X 78	GF236	3	16	400
24 X 48 X 78	GF248	6	20	542
24 X 60 X 78	GF260	9	24	676



MODEL DY248 SHOWN

MODEL DY - PLASTIC BINS & SHELVES - CLEARVIEW DOORS

WxDxH (in)	Cat. No.	No. of Bins		Wgt. (lbs)
		Big	Large	
24 X 36 X 78	DY236	0	16	382
24 X 48 X 78	DY248	0	20	470
24 X 60 X 78	DY260	0	24	540



SECURITY STORAGE CABINETS - PLASTIC BIN WELDED - SOLID DOORS



Models DF, DP, DE – Durable closed storage cabinets for small part inventory organization

FEATURES

All welded 14 gauge construction (walls & shelves)

Full louvered panels – back wall & doors

Yellow plastic bin sizes:

Backwall: Big bins (16-1/2"w x 14-3/4"d x 7"h)

Large Bins (8-1/4"w x 11"d x 7"h)

Medium Bins (5"w x 5-1/2"d x 11"h)

Doors: Small bins (4-1/8"w x 7-1/2"d x 3"h)

Lockable doors with lever handle, 3 point lock system
doors open full 180° (padlock not included)

4" high legs

Legs allow moving of unit with fork lift truck

Overall height – 78"

Powder coated gray finish

Options:

Extra Big Bins – Code RG

Extra Large Bins – Code RB

Extra Medium Bins – Code RC

Extra Small Bins – Code RD



MODEL DF SHOWN

MODEL DF - MIXED SIZE PLASTIC BINS

WxDxH (in)	Cat. No.	No. of Bins			Wgt. (lbs)
		Big	Large	Small	
24 X 36 X 78	DF236	10	16	96	406
24 X 48 X 78	DF248	10	25	128	510
24 X 60 X 78	DF260	15	24	160	612



MODEL DP SHOWN

MODEL DP – MIXED SIZE PLASTIC BINS

WxDxH (in)	Cat. No.	No. of Bins			Wgt. (lbs)
		Big	Large	Small	
24 X 36 X 78	DP236	18	0	96	402
24 X 48 X 78	DP248	18	9	128	506
24 X 60 X 78	DP260	27	0	160	592



MODEL DE SHOWN

MODEL DE - MAX-MIXED PLASTIC BIN CABINET

WxDxH (in)	Cat. No.	No. of Bins				Wgt. (lbs)
		Big	Large	Medium	Small	
24 X 36 X 78	DE236	0	16	24	96	412
24 X 48 X 78	DE248	6	18	24	128	518
24 X 60 X 78	DE260	9	21	30	170	628



SECURITY CABINETS - STATIONARY MESH (1, 2, 3 & 4 SHELVES)

Models MA, MB, MC, MD - Heavy duty lockable units to secure packages while maintaining visual contact



MODEL MB-BL SHOWN

OPTIONS

Solid panels available.

Shelf lips up - Code GA

Fork lift pockets - 3" x 6" (specify center line) - Code FP

All sides flattened 13 gauge expanded mesh 5' high - Code SF

Powder coated gray finish - Change BL to GP

FEATURES

Four sides flattened 13 gauge expanded mesh 4' high (also top cover).

2 flattened 13 gauge expanded mesh doors on one side with lockable hasp (padlock not included).

All welded construction.

Durable 12 gauge steel shelves, 3/16" thick angle corners, and 12 gauge feet.

Shelf lips down (flush) - see options.

Powder coated black finish (see options).

Clearance between shelves - Model MA - 46", Model MB - 22", Model MC - 15", Model MD - 10".

Overall height - 54".

DXW (IN)	1 SHELF CAT. NO.	WGT.	2 SHELVES CAT. NO.	WGT.	3 SHELVES CAT. NO.	WGT.	4 SHELVES CAT. NO.	WGT.
24 X 48	MA248-BL	234	MB248-BL	276	MC248-BL	318	MD248-BL	360
60	MA260-BL	266	MB260-BL	318	MC260-BL	370	MD260-BL	422
30 X 48	MA348-BL	260	MB348-BL	312	MC348-BL	364	MD348-BL	416
60	MA360-BL	298	MB360-BL	362	MC360-BL	426	MD360-BL	490
36 X 48	MA448-BL	288	MB448-BL	348	MC448-BL	408	MD448-BL	468
60	MA460-BL	330	MB460-BL	404	MC460-BL	478	MD460-BL	552
72	MA472-BL	378	MB472-BL	452	MC472-BL	532	MD472-BL	598

Note: doors add 4" depth

SECURITY CABINETS - HEAVY DUTY MESH & SOLID WITH ADJUSTABLE SHELVES

Models MH, MF, MV - Closed storage cabinet to secure materials or valuables



MODEL MF-BL SHOWN

MODEL MH-BL SHOWN



MODEL MV-BL SHOWN

OPTIONS

All sides 5' high - Code SF

Shelf lips up - Code GA

Fork lift pockets - 3" x 6" (specify center line) - Code FP

Additional Shelves - Code AT

Powder coated gray finish - Change BL to GP

FEATURES

All welded construction.

Adjustable middle shelf is standard - adjustable on 3-1/2" centers - see options for additional shelves.

Durable 12 gauge steel shelves, and 3/16" thick angle corners.

Shelf lips down (flush) - see options.

Powder coated black finish (see options).

Overall height - 54"

OTHER SPECIFICATIONS:

Model MH:

14 gauge solid sides 4' high with solid 14 gauge top.

2 solid doors on one side with lockable hasp (padlock not included).

Model MF:

Sides and back flattened 13 gauge expanded mesh 4' high (also top cover).

2 flattened 13 gauge expanded mesh doors on one side with lockable hasp (padlock not included).

Model MV:

14 gauge solid sides 4' high with solid 14 gauge top.

2 flattened 13 gauge expanded mesh doors on one side with lockable hasp (padlock not included).

MODEL MH - SOLID

DXW (IN)	1 ADJ. SHELF CAT. NO.	WGT.
24 X 48	MH248-BL	464
60	MH260-BL	538
30 X 48	MH348-BL	500
60	MH360-BL	588
36 X 48	MH448-BL	544
60	MH460-BL	620
72	MH472-BL	694

MODEL MF - MESH

DXW (IN)	1 ADJ. SHELF CAT. NO.	WGT.
24 X 48	MF248-BL	386
60	MF260-BL	430
30 X 48	MF348-BL	412
60	MF360-BL	464
36 X 48	MF448-BL	440
60	MF460-BL	496
72	MF472-BL	540

MODEL MV - MESH DOORS

DXW (IN)	1 ADJ. SHELF CAT. NO.	WGT.
24 X 48	MV248-BL	408
60	MV260-BL	468
30 X 48	MV348-BL	444
60	MV360-BL	518
36 X 48	MV448-BL	488
60	MV460-BL	550
72	MV472-BL	610



SECURITY CABINETS - HEAVY DUTY WELDED CABINETS - SOLID DOORS

Models DL, GG, HG - Durable closed storage cabinets to secure materials and valuables



MODEL
DL-BL
SHOWN

MODEL GG-BL SHOWN



MODEL HG-BL SHOWN



FEATURES

All welded 14 gauge construction.

Lockable doors, with lever handle, 3 point locking system. Doors open 180° (padlock not included).

Shelves adjust on 2-1/2" centers.

4" high feet.

Legs allow moving of unit with fork lift truck.

Powder coated black finish (see options).

Overall height - 78"

OTHER SPECIFICATIONS:

Model DL

Includes four 14 gauge reinforced shelves with 1-1/2" lips.

Model GG

Includes three 14 gauge reinforced shelves with 1-1/2" lips.

Three drawers 36" Unit - (5"h x 30"w x 20"d); 48" Unit - (5"h x 42"w x 20"d).

Model HG

Includes two 14 gauge reinforced shelves with 1-1/2" lips.

Lockable drawers (5"h x 16"w x 16"d) with 2 keys.

OPTIONS

Powder coated gray finish - Change BL to GP

Additional Shelf - Code RT

MODEL DL - SOLID DOORS WITH 4 SHELVES

DxW (IN)	CAT. NO.	WGT. (LBS)
18 X 36	DL136-BL	320
48	DL148-BL	392
60	DL160-BL	464
24 X 36	DL236-BL	370
48	DL248-BL	450
60	DL260-BL	520
72	DL272-BL	606

MODEL GG - SOLID DOORS WITH 3 SHELVES & 3 DRAWERS

DxW (IN)	CAT. NO.	WGT. (LBS)
24 X 36	GG236-BL	500
48	GG248-BL	598

MODEL HG - SOLID DOORS WITH 2 SHELVES AND DRAWERS

DXW (IN)	CAT. NO.	# OF DRAWERS	WGT. (LBS)
24 X 36	HG236-BL	3	408
48	HG248-BL	6	560
60	HG260-BL	9	700



SECURITY CABINETS - HEAVY DUTY WELDED CABINETS - CLEARVIEW DOORS

Models DJ, GE, HU - Durable closed storage, with clearview of contents, to secure materials and valuables



MODEL DJ-BL SHOWN



MODEL GE-BL SHOWN



MODEL HU-BL SHOWN

FEATURES

- All welded 14 gauge construction.
- Clearview door panels are 13 gauge expanded mesh.
- Lockable doors, with lever handle, 3 point locking system. Doors open 180° (padlock not included).
- Shelves adjust on 2-1/2" centers.
- 4" high feet.
- Legs allow moving unit with fork lift truck.
- Powder coated black finish (see options).
- Overall height - 78"

OTHER SPECIFICATIONS:

- Model DJ**
Includes four 14 gauge shelves with 1-1/2" lips
- Model GE**
Includes three 14 gauge reinforced shelves with 1-1/2" lips
Three drawers 36" Unit - (5"h x 30"w x 20"d); 48" Unit - (5"h x 42"w x 20"d)
- Model HU**
Includes two 14 gauge reinforced shelves with 1-1/2" lips
Lockable drawers (5"h x 16"w x 16"d) with 2 keys
- OPTIONS**
Powder coated gray finish - Change BL to GP
Additional Shelf - Code RT

MODEL DJ - CLEARVIEW DOORS

DxW (IN)	CAT. NO.	WGT. (LBS)
18 X 36	DJ136-BL	306
48	DJ148-BL	368
60	DJ160-BL	430
24 X 36	DJ236-BL	354
48	DJ248-BL	426
60	DJ260-BL	496

MODEL GE - CLEARVIEW DOORS WITH 3 SHELVES & 3 DRAWERS

DxW (IN)	CAT. NO.	WGT. (LBS)
24 X 36	GE236-BL	438
48	GE248-BL	534

MODEL HU - CLEARVIEW STORAGE CABINET WITH DRAWERS

DXW (IN)	CAT. NO.	# OF DRAWERS	WGT. (LBS)
24 X 36	HU236-BL	3	416
48	HU248-BL	6	562
60	HU260-BL	9	700



SECURITY CABINETS - 1 DOOR

Models WP, JR, JS - Closed storage cabinet to secure materials or valuables



MODEL WP SHOWN



MODEL JR SHOWN



MODEL JS SHOWN

FEATURES

All welded construction.

Lockable door with 2 keys (Models WP & JR).

Lockable drawers (keyed alike) with 2 keys - 5"h x 16"w x 16"d - (Models JR & JS).

Durable 14 gauge steel shelves & sides and 12 gauge feet.

Top shelf front lip down, 3 other lips up for retention.

Bottom shelf lips down (flush).

Powder coated gray finish (see options).

Clearance between shelves - 24" (Model WP); 19" (Model JR).

Overall height - 33".

OPTIONS

Add middle shelf lips down (flush) - Code SM (Except Model JS)

Vinyl matting on work surface - Code VM

MODEL WP - 1 DOOR

DxW (IN)	CAT. NO.	WGT. (LBS)
24 X 18	WP218	126

MODEL JR - 1 DOOR WITH 1 DRAWER

DxW (IN)	CAT. NO.	WGT. (LBS)
24 X 18	JR218	152

MODEL JS - WITH 4 DRAWERS

DxW (IN)	CAT. NO.	WGT. (LBS)
24 X 18	JS218	232



SECURITY CABINETS - 1 & 2 DOOR

Models WJ, JK, JL - Closed storage cabinet to secure materials or valuables



MODEL WJ SHOWN



MODEL JK SHOWN



MODEL JL SHOWN

FEATURES

- All welded construction.
- Lockable door(s) (keyed alike) with 2 keys (Models WJ & JK).
- Lockable drawers (keyed alike) with 2 keys - 5”h x 16”w x 16”d - (Models JK & JL).
- Durable 14 gauge steel shelves, 14 gauge sides and 12 gauge feet.
- Top shelf front lip down, 3 other lips up for retention.
- Bottom shelf lips down (flush).
- Powder coated gray finish (see options).
- Clearance between shelves - 24” (Models WJ & JK).
- Overall height - 33”

OPTIONS

- Add middle shelf lips down (flush) - Code SM (Model WJ only)
- Vinyl matting on work surface - Code VM
- Middle shelf (behind door) shelf lips down (flush) - Code HM (Model JK only)
- Wood top - Code WT
- Drawers keyed differently - Code KS (Models JK & JL)

MODEL WJ - 2 DOORS

DxW (IN)	CAT. NO.	WGT. (LBS)
18 X 36	WJ136	142
24 X 36	WJ236	162

MODEL JK - WITH 4 DRAWERS & 1 DOOR

DxW (IN)	CAT. NO.	WGT. (LBS)
18 X 36	JK136	318
24 X 36	JK236	362

MODEL JL - WITH 8 DRAWERS

DxW (IN)	CAT. NO.	WGT. (LBS)
18 X 36	JL136	412
24 X 36	JL236	462

