

SR-108-FR

9" X 24" X 6"

FIRE EXTINGUISHER CABINET

FIRE RATED

STANDARD CONSTRUCTION FEATURES

- 2" Turnback (Front Welded to Tub)
- Full Glass Door w/ Full Length Piano Hinge
- Glass Size 5" x 20" (Glass Opening 4" x 19")
- Grey or White Powder Coat Paint Finish
- Accommodates 10lb Dry Chemical Fire Extinguisher
- Stainless Steel Paddle Latch
- Satin Coat Galvanized Exterior Tub w/ Type X Drywall Lining

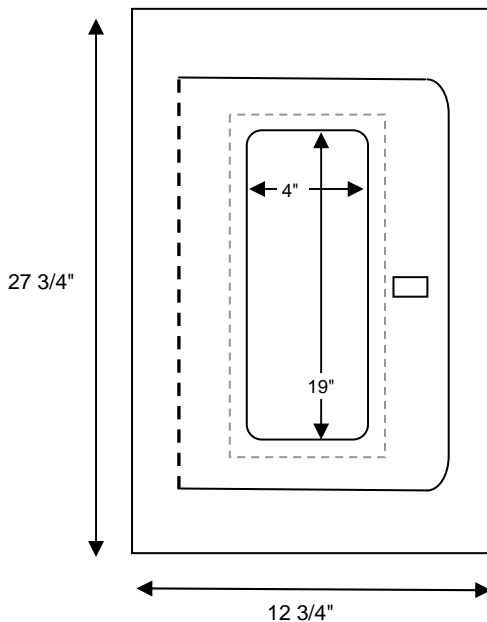
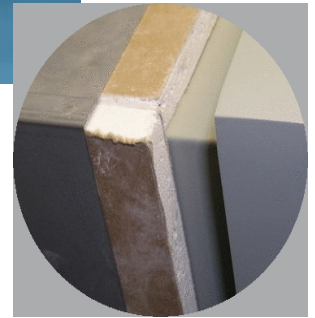
Rating:

Warnock Hersey International
Test Report WHI-495-1534
2 hour vertical fire rated assembly

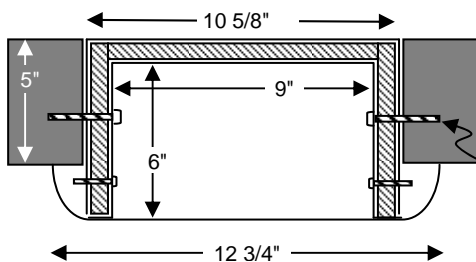


Installation:

- Rough opening should be 1/4" larger than Exterior Tub (H x W)
- Installation Instructions are included with each cabinet

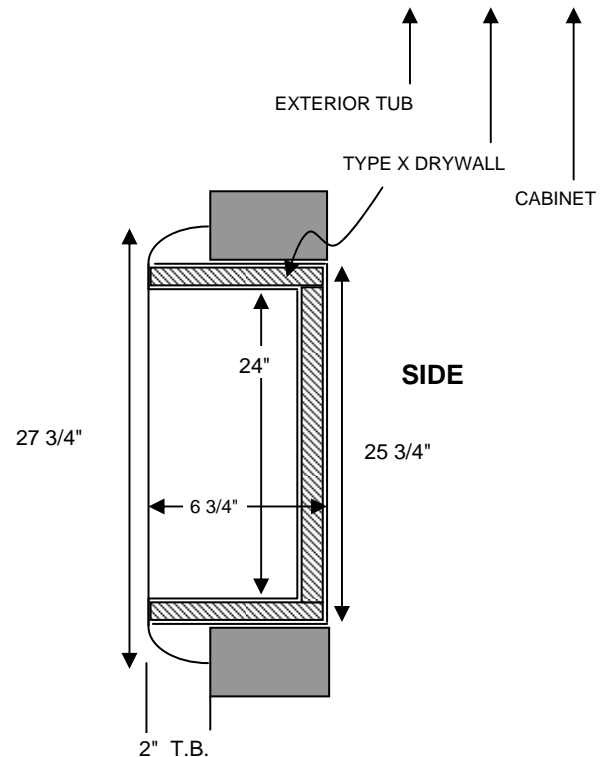


FRONT



TOP

No. 10 x 2 1/2" Self Tapping
Mounting Screws Not Included



SIDE

 **herbertwilliams** Since 1908
FIRE EQUIPMENT LTD.

MADE IN CANADA

www.herbertwilliams.com