

Double Gas-Cylinder Hand Trucks

Safely transport two compressed gas cylinders and avoid accidents

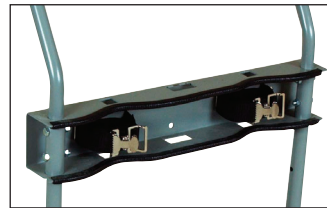
- Accepts two gas cylinders with combined diameters up to 23-in (584-mm), including fuel and oxidizer cylinders common in welding applications
- Three wheel types (pneumatic, steel, flat-free) with load capacities from 600- to 1,000-lb (272- to 453-kg)

Never compromise safety when it comes to handling heavy compressed gas cylinders. Constructed of 1-in (25-mm) and 1.25-in (32-mm) diameter round steel tube with continuous welding, these durable, double-cylinder trucks provide optimum safety, strength, and longevity. Floor plate made of thick 11-gauge (3-mm) steel with safety fins prevents warping or breaking. The unique zero-lift height loading floor plate lays flat, thereby eliminating the need to lift cylinder during loading and unloading. Corrosion-resistant powder coat finish throughout for long life and smooth handling.

Hold gas cylinders in place independently for improved safety. Heavy-duty 1.5-in (38-mm) wide poly straps, lab tested to 1138-lb (516-kg), feature steel cinch buckles for secure attachment of cylinder—eliminating any cylinder rolling potential seen in chain-secured units. Exclusive bumper guard edging grips cylinder and minimizes damage to cylinder and hand truck.

All main wheels have dual ball bearings for easier rolling—less effort required.

Models 35032 and 35036 include wide-set, dual rear casters for increased stability and maneuverability. Caster carriage features heavy steel hinge bars and nylon washers for smooth folding action and easy storage in tight spaces. Optional locking posts and collar plates ensure total cylinder immobilization, or accessorize hand trucks with a tool tray or lockable tool box for securing torches and equipment.



Exclusive bumper guard vinyl edging reduces damaging scratches/dents to cylinder and cart.



35038



35032



35020



Double cylinder hand truck holds gas cylinders in place independently for improved safety.

Double Cylinder Hand Trucks

Max Cylinder Diameter in/mm	Wheel Type	Wheel Size in/mm	Rear Casters in/mm	Nominal Dimensions H x W x D	Straps per Cylinder	Weight Capacity lb/kg	Approv/Lstg Regulation	Model No	Ship Wt lb/kg
(1) 10/254 (1) 13/330	Pneumatic	10.5/267	—	47 x 33 x 19 in 1194 x 838 x 483 mm	1	700/318	O, C, G, A	35028	52/24
(1) 10/254 (1) 13/330	Flat-free	10/254	—	47 x 33 x 19 in 1194 x 838 x 483 mm	1	700/318		35030	52/24
(1) 10/254 (1) 13/330	Pneumatic	10.5/267	3/76	47 x 32 x 20 in 1194 x 800 x 508 mm	1	1000/454		35032	68/31
(1) 10/254 (1) 13/330	Pneumatic	16/406	5/127	47 x 34 x 27 in 1194 x 864 x 686 mm	1	1000/454		35036	120/54
(1) 10/254 (1) 13/330	Steel	20/508	—	47 x 32 x 27 in 1194 x 813 x 610 mm	1	600/272		35020	68/31
(1) 10/254 (1) 13/330	Pneumatic	16/406	—	47 x 34 x 27 in 1194 x 864 x 686 mm	1	1000/454		35038	80/36

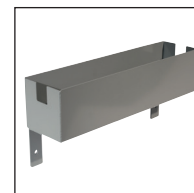
1 Year
Limited Warranty

Accessories for Double-Cylinder Hand Trucks

Description	Nominal Dimensions* H x W x D	Model No	Ship Wt lb/kg
Tool tray attachment	8 x 20 x 5 in 203 x 508 x 127 mm	35388	15/7
Tool tray attachment with lockable lid	8 x 20 x 5 in 203 x 508 x 127 mm	35386	14/6
Cylinder locking post and collar, set of two	43 x 4 x 8 in 1092 x 102 x 203 mm	35384	13/6

*Actual tool box dimensions are 5 x 20 x 5 in (203 x 508 x 127 mm)

35388
Tool tray



35084
Locking posts for total cylinder immobilization

